



FAMILY TREE EXPLORERS

Kids on a Family Safari!

Let's explore your family's past with a few tools from your safari backpack.

Directions: Match these tools with each of the steps to exploring your family's history below.



BINOCULARS



Device for viewing and finding distant objects

CAMERA



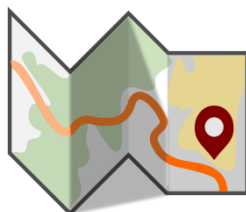
Device for capturing visual images

COMPASS



An instrument that shows directions

MAP



A diagram of an area of land

1. Sign in to [FamilySearch.org](https://www.familysearch.org) to get started in the right **direction**.
2. View **diagrams** of family relationships called family trees.
3. **Capture** and preserve photographs of your family.
4. Look at records to **find** relatives that aren't in your family tree yet.

Lesson 1

SIGN IN TO FAMILYSEARCH.ORG



Get help ▾

Free Account



Connect Generations

With a FamilySearch account, a world of family history possibilities comes to life. Start making connections today.

Sign In to FamilySearch

Username

Password

Stay signed in for 2 weeks

[Sign In](#)

[Forgot your username or password?](#)

OR

[LDS Account](#)

Familysearch.org is the church's website for recording family history information and preparing names for temple work. You can upload photos, stories, and documents about your family to preserve them and share them with others. Once you have signed in, you're ready to begin exploring!



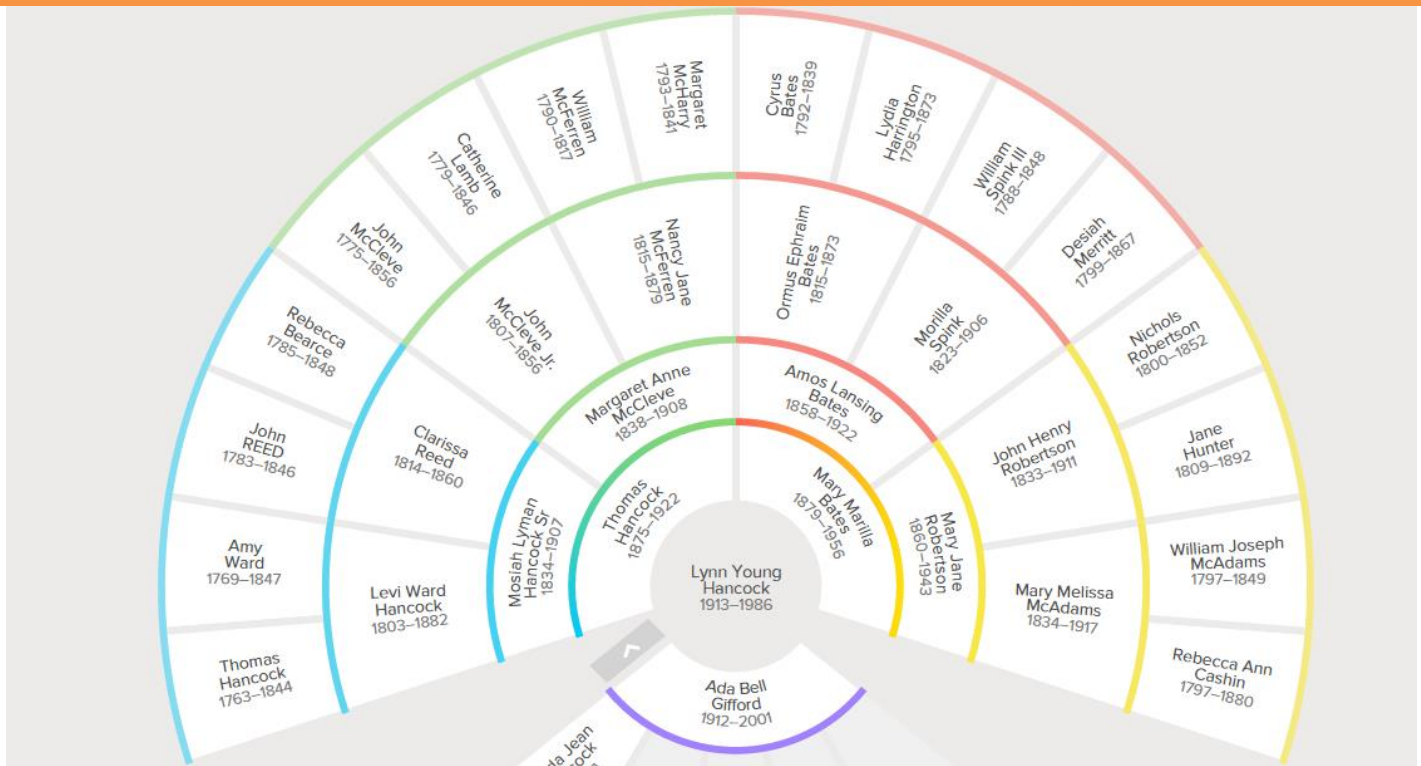
**YOU'RE
TAKING A STEP
IN THE RIGHT
DIRECTION!**

TO DO:

- With the help of your parents, create an account at FamilySearch.org.
- Make a note of your username and password so you don't forget how to log in.

Lesson 2

FAN AND PEDIGREE CHART



You can view your family tree in many ways! A family tree is a diagram that maps out relationships to parents, grandparents, ancestors, and even cousins (in a descendency tree).

TO DO:

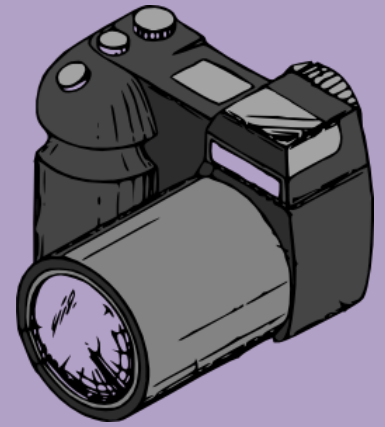
- Click "Family Tree" to view a diagram of your ancestors. Follow it back to see more generations.
- If your tree is empty, add your parents and grandparents' names.
- Try all four of the tree views: landscape, fan chart, portrait, and descendency.



TIP: MAP OUT YOUR PARENTS AND GRANDPARENTS ON A BLANK FAMILY TREE FOR PRACTICE.

Lesson 3

PHOTOS AND STORIES



Family Tree Memories Search Indexing Temple

Messages Volunteer Get Help

Nicole Dyer

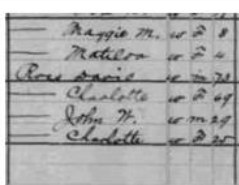
PHOTOS STORIES DOCUMENTS AUDIO PEOPLE ALBUMS FIND

HELP OTHERS



UPLOAD

Photos: 777



It's easy to add a photo, story, or audio clip to FamilySearch and preserve it forever! Memories and photos that you add of living people are kept private. Only you and your parents (and someday your children) can view them.

TO DO:

- Upload a photo of yourself or a family member.
- Add a story about one of your grandparents – write a couple sentences about them from memory.
- View photos of your ancestors if other users have added any.



**TIP: CAPTURE
IMPORTANT
PHOTOS FROM
YOUR OWN LIFE
TOO.**

Lesson 4

FINDING A NAME



The screenshot shows a family tree software interface. On the left, there are three panels of family members, each with a dropdown arrow and a 'Children' link. The first panel lists James Glenn Dyer (1908-1995) and Nona Richards (1921-1994). The second panel lists Lynn Young Hancock (1913-1986) and Ada Bell Gifford (1912-2001). The third panel lists Charles William Elder (Living) and Renee Hollingsworth (Living). In the center, a 'Record Hints' section is highlighted in blue, showing three hints for 'Lynn Hancock' from Idaho, Oregon, and Idaho. On the right, a detailed record for 'Lynn Hancock' is shown, mentioning he is in the record of Richard Lynn Hancock. The record includes fields for Name, Birthplace, Gender, Wife, and Son. Below this, another section titled 'Other information in the record of Richard Lynn Hancock from Idaho Deaths and Burials' provides details for Richard Lynn Hancock, including his Name, Gender, Burial Date, Burial Place, and Death Date.

Field	Value
Name:	Lynn Hancock
Birthplace:	Taylor, Arizona, Usa
Gender:	Male
Wife	Sarah Hoagland
Son	Richard Lynn Hancock

Field	Value
Name:	Richard Lynn Hancock
Gender:	Male
Burial Date:	06 Jul 1939
Burial Place:	Idaho Falls, Idaho
Death Date:	03 Jul 1939

You can help your family tree grow by discovering the names of your relatives. Some family trees are missing many names, and some look full, but every tree has some empty branches to fill in! Look in records like censuses and death certificates to find people. If you spend an hour researching every week for a month, you will start to find names. Begin your research with a prayer so you'll be guided by the Spirit.

TO DO:

- Click on a hint for one of your great grandparents and attach the record if it's a match. Attach more records with your parents' help.
- Search for more historical records about your relatives.
- When you find a person not in family tree, add them to the tree and reserve their temple ordinances.



TIP: AS YOU LOOK INTO THE PAST, TAKE NOTES ON WHAT YOU FIND.