

# John Robert Dyer and Barsheba Tharp

## DNA Research Report

Report to: Dyer family  
10 November 2019

Researcher: Nicole Dyer

---

## Objective

The objective of this research project is to determine the parents of John Robert Dyer, born about 1810-1813 in either Tennessee or North Carolina and died 19 December 1879 in Hawkins County, Tennessee. He married Barsheba Tharp in about 1830, probably in Tennessee, and resided in Hawkins County, Tennessee according to the 1830-1870 federal censuses.

## Results Summary

- Identified many DNA matches who are descendants of Barsheba Tharp and John Robert Dyer
- Ordered a network graph with matches of Robert and his two brothers DNA matches at Ancestry on their paternal side
- Identified the cluster who descend from John Robert Dyer and Barsheba Tharp
- Identified probable parents of Barsheba Tharp - Lewis Tharp and Johanna West
- Identified possible parents of John Robert Dyer - Robert Daugherty and Sarah Taylor

## Background

Descendants of John Robert Dyer have never found proof of his parentage. Some of his descendants claim that his parents are John Robert Dyer Sr. and Sarah Taylor, yet no evidence has been found of their existence or relationship to John Robert Dyer of Hawkins, Tennessee.

A history of John Robert Dyer and his wife, Barsheba Tharp, was written by his great-granddaughter, Nancy Mildred Beals DeWitt (1923-2009). In this article, Nancy states the following about John Robert Dyer's origins:

*The latest research I can find shows John Robert Dyer was probably born in Greensboro, N. Carolina between 1813 1818 and Barsheba Tharpe was born on 8 Sept. 1813. We think her father's name was John or Robert Lewis Tharpe but we are not positive. We think his mother's name was Sarah or Sara Taylor.*

*John Robert and Barsheba were both orphans. They met when both were working where they fell in love and got married. They started housekeeping in a one room log cabin with*

---

*a dirt floor and not a stick of furniture. They gathered some fresh pine needles and piled them in the corner for a bed.*<sup>1</sup>

The parents of John Robert Dyer are listed in a family group sheet created by Marvel Ruth Bleak Spiering as John Robert Dyer Sr. and Sarah Taylor.<sup>2</sup>

Prior to this research project, census records have been located to show the residence of John Robert Dyer in Hawkins County, Tennessee, from 1830-1879. The 1880 mortality schedule of the census states that he died 19 December 1879, at age 70, and that he was a resident of Hawkins County for 70 years (his entire life).<sup>3</sup> From this record, we can deduce that John Robert Dyer was born in 1809 in Hawkins County, Tennessee.

Nancy DeWitt wrote the following about John Robert Dyer's death:

*In about 1869, Grandpa Dyer got what they thought was rheumatism. He was so bad that my Grandmother Elizabeth and Aunt Polly used to take turns going over and taking care of him at night. He was bedfast for 10 years before he died on the 19 of December 1879. He was only 66 years old. He is buried in the Dyer graveyard there on the hill overlooking his little Terrapin Valley.*<sup>4</sup>

The statement that John Robert Dyer was only 66 years old when he died likely derives from Nancy DeWitt's estimation that John Robert Dyer was born in 1813. The 1830 census was the closest to his birth, and his age range was 1810-1815.<sup>5</sup> It is most likely that John Robert Dyer was born between these years, probably in 1813.

---

<sup>1</sup> Nancy Mildred Beals DeWitt, "John Robert Dyer and Barsheba Tharpe: Valley of The Terrapins, Slow and Steady Wins the Race," article online, contributed by LindaCroy1 on 10 April 2016, attached to John Robert Dyer (LZKV-1TV), 10 April 2016, *FamilySearch* (<https://www.familysearch.org> : accessed 10 Nov 2019). The date of the writing of this article is unknown, but must have occurred before Nancy Mildred Beals DeWitt died in 2009.

<sup>2</sup> Marvel Bleak Spiering, Family Group Sheet of John Robert Dyer Jr. and Barsheba Thorpe, ca. 1986; image emailed from Loa Cyr [cyrloa@yahoo.com] in files of the author.

<sup>3</sup> 1880 U.S. census, Hawkins County, Tennessee, Mortality Schedule, 4th District, p. 999 (penned), line 10, family 171, John R. Dyer; image, Ancestry (<https://ancestry.com> : accessed 12 Nov 2018); citing National Archives publication T655, roll 29.

<sup>4</sup> Nancy Mildred Beals DeWitt, "John Robert Dyer and Barsheba Tharpe: Valley of The Terrapins, Slow and Steady Wins the Race," article online, contributed by LindaCroy1, attached to John Robert Dyer (LZKV-1TV), 10 April 2016, *FamilySearch* (<https://www.familysearch.org> : accessed 12 Nov 2018).

<sup>5</sup> 1830 U.S. census, Hawkins County, Tennessee, p. 22 (penned), line 5, Robert Dyer; image, *FamilySearch* (<https://www.familysearch.org> : accessed 12 November 2018); citing National Archives microfilm publication M19, roll 178.

## Previous Research

In a [previous research session](#), no connections to parents for John Robert Dyer were located through traditional research.<sup>6</sup> An 1863 courthouse fire in Hawkins County, Tennessee destroyed many land, tax, and marriage records prior to 1850.<sup>7</sup>

One of the future research suggestions from previous research was to examine autosomal DNA matches to descendants of John Robert Dyer to find leads to the next generation of Dyer ancestors.

## Limitations & Methodology

Autosomal DNA is helpful for identifying biological family relationships in 6-8 generations. DNA matches with other individuals do not reveal the specific relationship, only that they share a certain amount of DNA is shared. Careful research and pedigree intersection can help a researcher determine who the common ancestral couple could be. Creating clusters with shared matches in a test taker's DNA match list can help determine that a group of matches are all related to each other. Determining the ancestral couple of individuals in a cluster can help determine a missing ancestor in the test taker's family tree.

## Findings

With over 90,000 total DNA matches in RD's list, much time was spent reviewing DNA matches on the paternal side and identifying the close matches.<sup>8</sup> After that, 2-3rd cousin matches were identified. Eventually, over forty-five descendants of John Robert Dyer and Barsheba Tharp were identified among the autosomal DNA matches of Robert G. Dyer (RGD), the second-great-grandson of John Robert Dyer and Barsheba Tharp.

Using the shared match lists of these forty-five descendants could identify matches who descend from an ancestor further back in John Robert Dyer and Barsehba Tharp's family tree. To narrow down the shared matches lists, research focused first on locating Barsheba Tharp's parents and separating out the DNA matches who are their descendants.

---

<sup>6</sup> Nicole Dyer, "John Robert Dyer Research Report," 8 December 2018, (<https://docs.google.com/document/d/1NevdFJm22rJ9FwkuzCAAdHwE1KgOdTTUIJoshFXbgXv4/edit?usp=sharing>).

<sup>7</sup> "Lost Records: Courthouse Fires and Disasters in Tennessee," *Tennessee Secretary of State* (<https://sos.tn.gov> : accessed 8 Dec 2018).

<sup>8</sup> "AncestryDNA Results for Robert Dyer," database report, *Ancestry DNA* (<https://ancestry.com> : accessed 11 Nov 2019), 99,114 total DNA matches, 4,828 4th cousin or closer, and 94,286 distant matches.

## Separating Tharp Matches

Previous research on John Robert Dyer and Barsheba Tharp found two Tharps who were neighbors and associates with John Robert Dyer and Barsheba after 1830. Lewis Tharp was a neighbor to Robert Dyer in Hawkins County, Tennessee in 1840.<sup>9</sup> William Tharp was taxed in the same district as Robert Dyer in Hawkins County, Tennessee in 1836.<sup>10</sup> A will was found for William Tharp, which he signed 17 November 1867, and was proved March 1875.<sup>11</sup> His will mentioned two sons who were to be his executors - Lewis and William Thomas Tharp. He mentioned his "present" wife Elizabeth and daughter Emily Louisa Tharp.

John Robert Dyer and Barsheba Tharp's eldest son, Augustus, married Lucinda Woods on 7 November 1849.<sup>12</sup> The bondsman on Augustus's marriage bond was William Tharp. These connections to William Tharp indicate a close relationship with him.

An autosomal DNA match to RGD in the GEDmatch database (Tester A) responded to a message that she was the daughter of Frances Tharp.<sup>13</sup> She stated that Frances was the daughter of Katie Gandy and Samuel Tharp. Using this information, published family trees were searched to determine if she had a connection to Barsheba Tharp's parents. A public member tree at Ancestry showed that Samuel Tharp was the 2nd great grandson of Lewis Tharp and Judy Vernon, who resided in Hawkins, Tennessee from 1810 to about 1845.<sup>14</sup> Lewis Tharp then

---

<sup>9</sup> 1840 U.S. Census, Hawkins County, Tennessee, p. 66 (penned), line 17, Robert Dyer; image, *FamilySearch* (<https://familysearch.org> : accessed 12 Nov 2018); citing National Archives publication M704, roll 526.

<sup>10</sup> Hawkins County, Tennessee, 1836 Tax List, District No. 15, p. 544, line 6, Robert Dyer; Tennessee, Early Tax List Records, 1783-1895, database with images online, *Ancestry* (<https://www.ancestry.com> : accessed 10 December 2018); citing Early Tax Lists of Tennessee. Microfilm, 12 rolls, The Tennessee State Library and Archives, Nashville, Tennessee.

<sup>11</sup> Hawkins County, Tennessee, Wills, William Tharp, signed 17 November 1869, recorded March Term 1875; "Tennessee Probate Court Files, 1795-1955," > Wills, Mays, Crocia - Ward, Walter M., DGS 4750387, images 2730-2733, *FamilySearch* (<https://www.familysearch.org> : accessed 23 Nov 2018); citing FHL microfilm 1572795.

<sup>12</sup> "Tennessee, County Marriages, 1790-1950," database with images, *FamilySearch* (<https://familysearch.org/ark:/61903/1:1:V5HC-3V7> : 10 Dec 2018), Augustus Dyer and Lucinda Woods, 07 Nov 1849; citing Hawkins, Tennessee, United States, Marriage, p. 20, Tennessee State Library and Archives, Nashville and county clerk offices from various counties; FHL microfilm 1,572,805.

See also Profile of Augustus Washington Dyer, (1811-1907) ID KGCL-L6H, *FamilySearch Family Tree* (<https://www.familysearch.org/tree/person/details/KGCL-L6H> : accessed 10 Dec 2018). Source for the marriage date is given by user: unknown4470317 with statement: "Taken from the Dyer Bible and Census of Hancock Co. Tenn."

<sup>13</sup> GEDmatch, "One-to-many DNA matches," database, *GEDmatch* (<https://www.gedmatch.com> : accessed 19 January 2019), matches for Robert Dyer, kit A534458, showing match with Kit M767887, total cM: 36.

<sup>14</sup> Anderson Doughty Family Tree, "Public Member Trees," entry for Samuel Lee Tharp (1903-1964), *Ancestry* (<https://www.ancestry.com/family-tree/tree/32244531> : accessed 26 October 2019), submitted by user JudyJudyJudyD. See also entry for Lewis Tharp (1783-1853).

moved to Washington County, Arkansas where he died in 1853.<sup>15</sup> A *FindAGrave* memorial for Lewis Tharp states that he was married first to Johanna West, who died before 1817, and that Lewis and Johanna were the parents of William Tharp, b. 1800-1810 in Hawkins, Tennessee. He then married Judy Vernon on 10 September 1817 in Hawkins County.<sup>16</sup>

Mildred Beals Dewitt wrote in her history of her great-grandparents, John Robert Dyer and Barsheba Tharp, that Barsheba's father's name was "John or Robert Lewis Tharpe but we are not positive."<sup>17</sup>

The match between RGD and Tester A is a clue that Lewis Tharp was the father of Barsheba Tharp. Barsheba was born in 1813, during Lewis's marriage to Johanna West.<sup>18</sup> Published family trees agree that Johanna West was the daughter of John West (1760-1840) and Bathsheba Arnold (1760-1805).<sup>19</sup> Perhaps Johanna named her daughter Barsheba after her mother Bathsheba. Future research will include research to test the hypothesis that Johanna West was the daughter of John West and Bathsheba Arnold.

The segments shared by Tester A and RGD were compared with segments already determined to have been inherited by descendants of John Robert Dyer and Barsheba Tharp, through a match of RGD to Tester B.<sup>20</sup> The segments matched in the same location, as shown in table 1, making it reasonable to suggest that Tester A and RGD are both descendants of Lewis Tharp, and that Lewis was the father of Barsheba (Tharp) Dyer. Additional DNA matches who overlap on this segment could create a triangulated group, proving that they all descended from a common ancestor. This can be done in future research.

---

<sup>15</sup> *Find A Grave*, database and images (<https://www.findagrave.com> : accessed 26 October 2019), memorial page for Lewis Tharp (1783–25 Oct 1853), Find A Grave Memorial no. 41677826, citing Reese Cemetery, Hicks, Washington County, Arkansas, USA ; Maintained by ctwardo (contributor 47093149) .

<sup>16</sup> "Tennessee State Marriages, 1780-2002," Lewis Tharp and Judy Vernon, 10 Sep 1817, Hawkins, Tennessee, database with images, *Ancestry* (<https://ancestry.com> : accessed 10 Nov 2019).

<sup>17</sup> Nancy Mildred Beals DeWitt, "John Robert Dyer and Barsheba Tharpe: Valley of The Terrapins, Slow and Steady Wins the Race," article online, contributed by LindaCroy1 on 10 April 2016, attached to John Robert Dyer (LZKV-1TV), 10 April 2016, *FamilySearch* (<https://www.familysearch.org> : accessed 10 Nov 2019). The date of the writing of this article is unknown, but must have occurred before Nancy Mildred Beals DeWitt died in 2009.

<sup>18</sup> 1850 U.S. Census, Hawkins County, Tennessee, population schedule, District No. 15, p. 864 (penned), dwelling 91, family 91, Beershiba Dyer in Robert Dyer household; image, *FamilySearch* (<https://www.familysearch.org> : accessed 12 Nov 2018); citing National Archives publication M432, roll 882.

<sup>19</sup> Lawrentz\_Baker Family Tree, "Public Member Trees," entry for Johanna West (1784-1817), *Ancestry* (<https://www.ancestry.com/family-tree/person/tree/116340507/person/310151908235/facts> : accessed 10 Nov 2019), submitted by user roblawrentz.

<sup>20</sup> "MyHeritage DNA Results for Robert Dyer," database report, *MyHeritage DNA* (<https://myheritage.com> : accessed 11 Nov 2019), predicting 1-2nd cousin relationship with Tester B, sharing 136 cM across 8 segments. Tester B identifies her parents as Carlton Glen Morris (1910-1984) and Maud Beals (1912-1989), and is a second-great-granddaughter of Barsheba Tharp and John Robert Dyer.

Table 1. Overlapping segment of RGD, Tester A, and Tester B at MyHeritage

Matching Individuals	Common Ancestor	Chromosome	Start position	Stop position
RGD - Tester B	John Robert Dyer and Barsheba Tharp	7	5,451,609	34,890,862
RGD - Tester A	Lewis Tharp and Judy Vernon	7	19,070,165	30,536,611

The hypothesis that Lewis Tharp and Johanna West were the parents of Barsheba Tharp helped separate match groups and identify common ancestral couples of the groups. So far, three AncestryDNA matches have been identified as descendants of Lewis Tharp:

- Tester C <sup>21</sup>
- Tester D <sup>22</sup>
- Tester E <sup>23</sup>

## Network Graph

A network graph of DNA matches can help visualize groups who are shared matches to each other and who may share a common ancestor. The network graph also shows how the clusters are connected to each other.

Two of Robert G. Dyer's brothers took autosomal DNA tests in order to identify more Dyer cousins: JWD and WD. Paternal cousins of RGD, JWD, and WD were identified in order to create a network graph of paternal matches. Paternal matches to be included in the network graph were identified through shared matches of four close paternal cousins:

- Tester F (1st cousin)<sup>24</sup>

---

<sup>21</sup> "AncestryDNA Results for Robert Dyer," database report, *Ancestry DNA* (<https://ancestry.com> : accessed 26 October 2019), predicting 4-6th cousin relationship with user Tester C, managed by [Private], sharing 26 cM across 2 segments. Tester C identifies his parents as Hubert Truman Roberts (1913-1994) and Jewel Katherine Hinkle (1916-1946).

<sup>22</sup> Ibid., predicting 4-6th cousin relationship with user Tester D sharing 24 cM across 1 segment. Tester identifies her parents as David Crocket Owens (1927-1988) and Alma Cleeta Cleek (1923-1949).

<sup>23</sup> Ibid., predicting 5-8th cousin relationship with Tester E managed by [Private], sharing 13 cM across 1 segment. Tester E identifies his parents as Robert Edward Cotton Brisbin (1920-2008) and Hazel Curtis Thomas (1922-1984).

<sup>24</sup> "AncestryDNA Results for Robert Dyer," predicting 1st cousin relationship with Tester F, sharing 1,012 cM across 36 segments. Documented relationship: first cousin through James Wesley Dyer and Beulah Lavert Bailey.

- Tester G (1st cousin once removed)<sup>25</sup>
- Teaster H (1st cousin once removed)<sup>26</sup>
- Tester I (1st cousin once removed)<sup>27</sup>

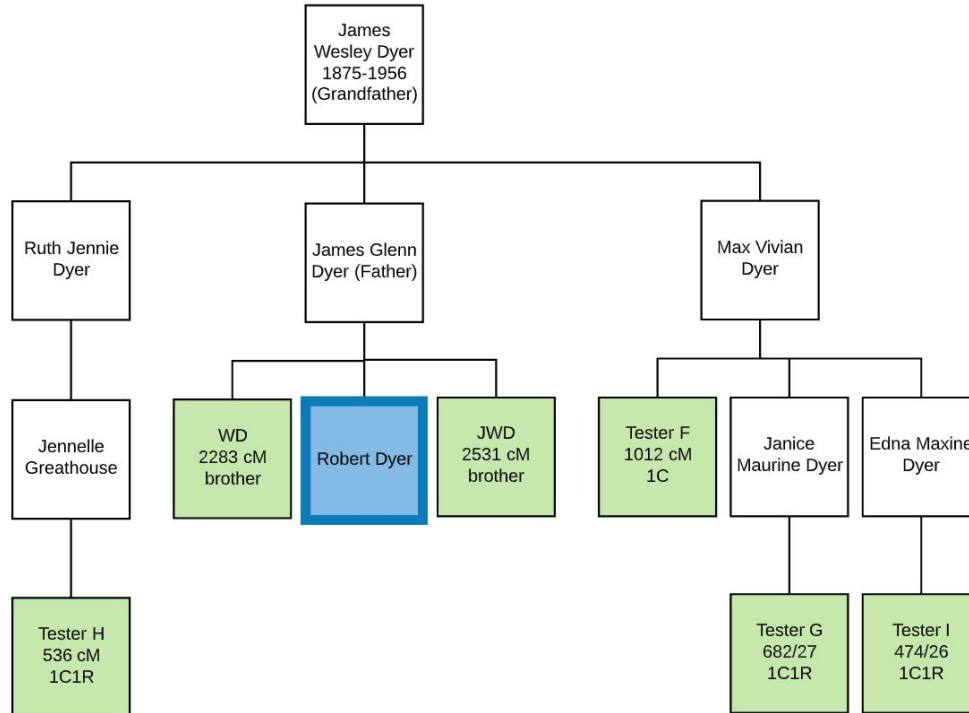


Figure 1. Brothers and close paternal cousins of RGD

Figure 2 shows the network graph with paternal matches of RGD, JWD and WD. Each node in the graph is a DNA match to either RGD, JD, or WD. Each line is a shared match connection between that DNA match and another match. When many matches also matched each other, they were formed into a cluster. The lines connecting clusters indicate relationships between the clusters.

<sup>25</sup> "AncestryDNA Results for Robert Dyer," predicting 1st-2nd cousin relationship with Tester G,, sharing 682 cM across 27 segments. Documented relationship: first cousin once removed through James Wesley Dyer and Beulah Lavert Bailey.

<sup>26</sup> "AncestryDNA Results for Robert Dyer," predicting 1st-2nd cousin relationship with Tester H, sharing 536 cM across 28 segments. Documented relationship: first cousin once removed through James Wesley Dyer and Beulah Lavert Bailey.

<sup>27</sup> "AncestryDNA Results for Robert Dyer," predicting 1st-2nd cousin relationship with Tester I, sharing 474 cM across 26 segments. Documented relationship: first cousin once removed through James Wesley Dyer and Beulah Lavert Bailey.

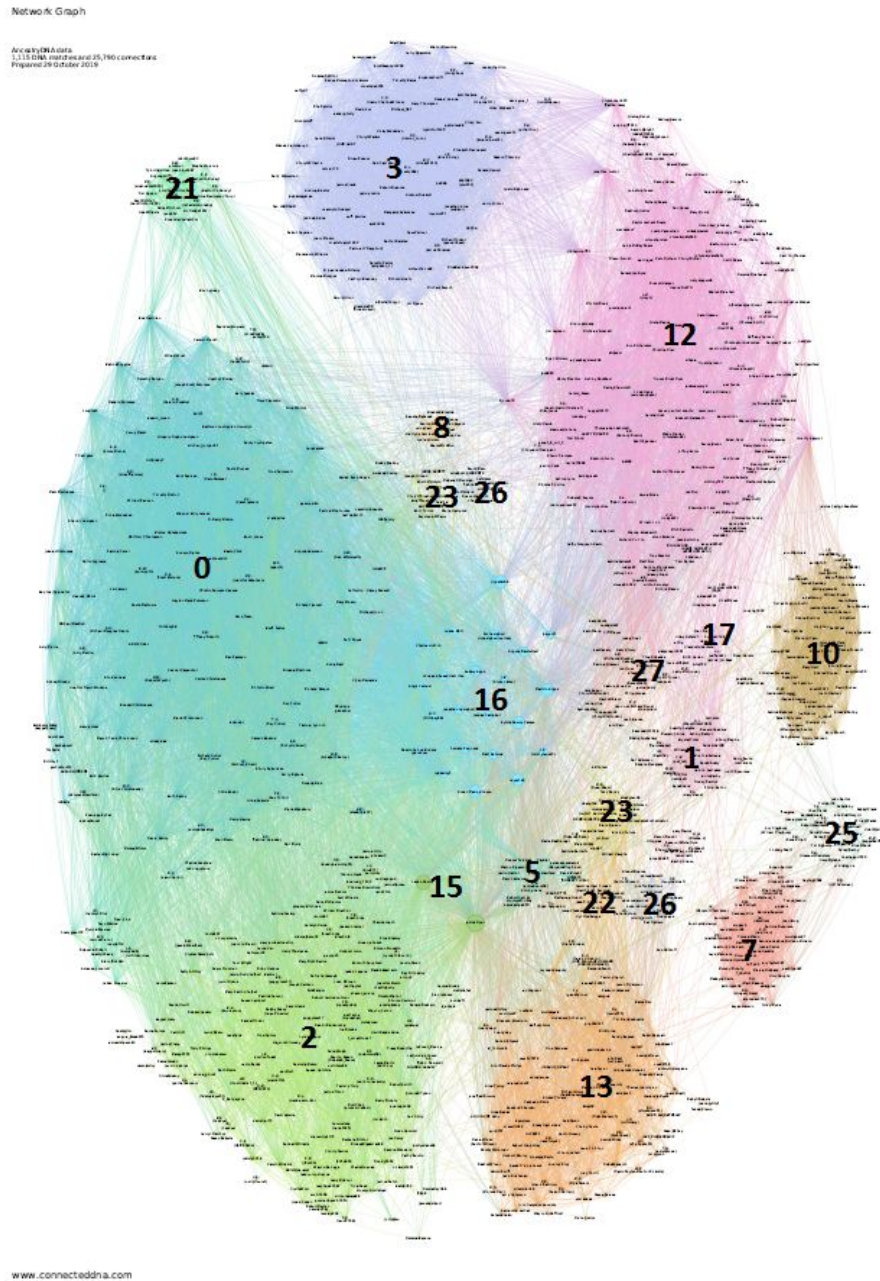


Figure 2. Network Graph of RGD, JWD, and WD's paternal DNA matches. Shelley Crawford, ConnectedDNA Sibling Network Graph for AncestryDNA profiles of RGD, JD, and WD (brothers), in files of author; ordered from <https://www.connecteddna.com/>.

The large pink cluster in the top right, labelled group #12, contains many descendants of John Robert Dyer and Barsheba Tharp. The closely connected blue cluster, group #3, contained DNA



matches whose common ancestor was unknown. Also closely connected to the Dyer/Tharp cluster is group #10, whose common ancestor was not known.

Determining the common ancestor of the DNA matches of group 3 and group 10 could reveal possible parents or ancestors of John Robert Dyer.

#### Group 10 - West/Arnold

One of the members of group 10 is a DNA match to RGD with Tester J.<sup>28</sup> This user's family tree included her mother, Verlie Doris Cook, daughter of Emma D. Hendricks, daughter of William Sanford Hendricks.<sup>29</sup> Ancestry gave a potential ancestor hint on the match page for RGD and Tester J for the common ancestral couple of Humphrey Isaac Arnold and Harriet Ann Smith, parents of Bathsheba Arnold, who was the mother of Joanna West, wife of Lewis Tharp. Several public member trees contain the relationship between Bathsheba Arnold and parents Humphrey Isaac Arnold (1727-1790) and Harriet Ann Smith (1727-1788).<sup>30</sup> Barsheba (Tharp) Dyer may have been named after her mother's mother, Bathsheba Arnold. More research is required to determine the accuracy of these parent-child relationships.

A preliminary conclusion about cluster 10 is that the common ancestral couple is Barsheba Tharp's grandparents, Humphrey Arnold and Harriett Smith. More research must be done for the DNA matches in this cluster to determine the common ancestral couple.

The matches already identified as descendants of Lewis Tharp were located in the pink cluster. This shows that the pink cluster has more than one common ancestor. Not only does it include descendants of John Robert Dyer and Barsheba Tharp, but descendants of Barsheba's father, Lewis Tharp. More research should be done on each match in the pink cluster to determine if they are a descendant of John Robert Dyer and Barsheba Tharp, a descendant of Lewis Tharp (and one of his two wives), or a descendant of a yet unidentified ancestral couple.

---

<sup>28</sup> "AncestryDNA Results for Robert Dyer," predicting 4-6th cousin relationship with user Tester J, sharing 41 cM across 2 segments. Tester J identifies her parents as Ernest Glyn Rutledge (1909-1999) and Verlie Doris Cook (1909-2004).

<sup>29</sup> Rutledge Family Tree, "Public Member Trees," entry for William Sanford Hendricks (1854-1930), *Ancestry* (<https://www.ancestry.com/family-tree/person/tree/116340507/person/310151908235/facts> : accessed 11 Nov 2019), submitted by user ann95135.

<sup>30</sup> An example of one of these published family trees is McFateFamily Tree, "Public Member Trees," entry for Bathsheba Arnold (17655-1821), *Ancestry* (<https://www.ancestry.com/family-tree/person/tree/156522152/person/342062881713/facts> : accessed 11 Nov 2019), submitted by user Amy McFate.

### Group 3 - Daugherty/Taylor

Group 3, the blue cluster, contains 89 DNA matches to RD, JD, and WD. Most matches are a DNA match to each of the three brothers, although some in group 3 do not match WD. This is due to the random recombination of DNA.<sup>31</sup>

The family trees of three DNA matches in group 3 were examined to find a common ancestor. These trees all included the surname Daugherty. A common ancestral couple among them was Robert Daugherty (1767-1844) and Sarah Taylor (1768-1828) who were married in Craven County, North Carolina, and migrated to Butler County, Kentucky, where they died.

DNA Matches	Family Tree
Match D17 to RGD, 49 cM, 4-6th cousins	Burden Flener Family Tree 1_2019-04-16, "Public Member Trees," entry for Robert Daugherty Rev (1767-1844) and Sarah Elizabeth Taylor (1768-1834), <i>Ancestry</i> ( <a href="https://www.ancestry.com/family-tree/tree/160373919">https://www.ancestry.com/family-tree/tree/160373919</a> : accessed 10 November 2019).
Match D15 (managed [Private]) to RGD, 29 cM, 4-6th cousins	Family file, "Public Member Trees," entry for Robert Daugherty (1759-1842) and Sally 'Sarah' Taylor (1768-1828), <i>Ancestry</i> ( <a href="https://www.ancestry.com/family-tree/tree/113137739">https://www.ancestry.com/family-tree/tree/113137739</a> : accessed 10 November 2019).
Match D10 to RGD, 33 cM, 4-6th cousins	Taylor Family Tree, "Public Member Trees," entry for Robert Daugherty (1767-1744) and Sarah "Sallie" Taylor (1768-1828), <i>Ancestry</i> ( <a href="https://www.ancestry.com/family-tree/tree/14898343">https://www.ancestry.com/family-tree/tree/14898343</a> : accessed 10 November 2019).

The name Sarah Taylor was passed down in Dyer family stories as the name of John Robert Dyer's mother. The current hypothesis is that this group includes matches who descend from John Robert Dyer's probable mother, Sarah Taylor, and possible father, Robert Daugherty.

Additional family trees of matches in group 3 were examined and several descendants of Robert Daugherty and Sarah Taylor were identified. Attachment 1 shows several of the matches identified using the trees attached to their DNA results and additional research and their descent from Robert Daugherty and Sarah Taylor.

The names Sarah Taylor and Robert Daugherty were added to RD's family tree linked to his DNA test results. AncestryDNA ThruLines were generated using RD's matches and the public

---

<sup>31</sup> *International Society of Genetic Genealogy Wiki*, "Autosomal DNA statistics," ([https://isogg.org/wiki/Autosomal\\_DNA\\_statistics](https://isogg.org/wiki/Autosomal_DNA_statistics) : last modified on 3 September 2018, at 20:29.)

member trees database at Ancestry.com. ThruLines shows possible lines of descent from a common ancestor to a tester's DNA matches. The ThruLines hypothesis generated for Robert Daugherty and Sarah Taylor suggests that RGD may be related to 71 DNA Matches through Robert Daugherty and Sarah Taylor.<sup>32</sup> Several of these matches are below 15 cM and could be false matches. Matches over 15cM are more likely to be identical by descent than identical by state (or identical by chance).<sup>33</sup> However some of the matches are likely to be identical by descent, and could lend evidence to the hypothesis that John Robert Dyer was the son of Robert Daugherty and Sarah Taylor.

The family trees of the DNA matches discussed above need to be verified to determine if the parent-child links are correct. This can be done in future research. If the DNA matches transfer their results to Gedmatch, MyHeritage, or FamilyTreeDNA, the segment data could be analyzed to determine if the segments triangulate with other descendants of Sarah Taylor and Robert Daugherty. This can also be done in future research.

### Challenges in the Daugherty/Taylor Family

One challenge discovered in looking at the trees of the Daugherty/Taylor cluster (group 3) is that the Daugherty Taylor families intermarried. It appears that Robert Daugherty and Sarah Taylor were first cousins who married each other.<sup>34</sup> Robert Daugherty was the son of Owen Daugherty and Mary Taylor. Sarah Taylor was the daughter of her husband's mother's brother, Moses Taylor and Elizabeth Prevatte.

Pedigree collapse, which occurs when first cousins get married, makes it difficult to analyze DNA matches.<sup>35</sup> The fact that they could be double or triple cousins can raise the amount of shared DNA between them and the test taker making them appear to be closer matches, when in fact they are 5-8th cousins several times. This will be difficult to sort through as each DNA match in cluster 3 is examined.

Several of the matches in group 3 descend from Owen Daugherty and Mary Taylor, parents of Robert Daugherty. Also, several of the matches in group 3 descend from Moses Taylor and Elizabeth Prevatte. But because both Mary Taylor and Moses Taylor are children of Robert

---

<sup>32</sup> "ThruLines for Robert Daugherty," report for Robert G. Dyer, 11 November 2019, *AncestryDNA* (<https://ancestry.com> : accessed 11 Nov 2019).

<sup>33</sup> *International Society of Genetic Genealogy Wiki*, "Identical by descent," ([https://isogg.org/wiki/Identical\\_by\\_descent](https://isogg.org/wiki/Identical_by_descent) : last modified on 23 November 2018, at 16:53) and "Identical by state," ([https://isogg.org/wiki/Identical\\_by\\_state](https://isogg.org/wiki/Identical_by_state) : last modified on 31 January 2017, at 08:57). See also Blaine Bettinger, "The Danger of Distant Matches," *The Genetic Genealogist*, 6 January 2017 (<https://thegeneticgenealogist.com/2017/01/06/the-danger-of-distant-matches/> : accessed 10 Nov 2019).

<sup>34</sup> Taylor Family Tree, "Public Member Trees," entry for Robert Daugherty (1767-1744) and Sarah "Sallie" Taylor (1768-1828), *Ancestry* (<https://www.ancestry.com/family-tree/tree/14898343> : accessed 10 November 2019).

<sup>35</sup> *International Society of Genetic Genealogy Wiki*, "Pedigree collapse," ([https://isogg.org/wiki/Pedigree\\_collapse](https://isogg.org/wiki/Pedigree_collapse) : last modified on 24 September 2018, at 15:53).

Taylor and Catherine Ellis, it is possible that this is the common ancestral couple of individuals in group 3.

One problem this raises is the question of proving each parent of John Robert Dyer. It is possible that Sarah Taylor was the mother of John Robert Dyer, but there is no concrete evidence linking him to Robert Daugherty as father. Since any descendants of Robert Daugherty's siblings and his mother's siblings can all be traced back to the same ancestral couple, Robert Taylor and Catherine Ellis, this is the probable ancestral couple. That leads to the question, who was the father of John Robert Dyer? If a DNA match in group 3 can be proven to descend from Owen Daugherty's side of the family, not his wife's Taylor side, then this might give evidence that Robert Daugherty is the father of John Robert Dyer. As of yet, all matches in group 3 descend from Robert Taylor and Catherine Ellis.

### Y-DNA Possibility

A male descendant of Robert Daugherty could be located who descends through an unbroken male line in order to test Y-DNA and compare with RD's Y-DNA test results at Family Tree DNA. This has been added to the future research suggestions. If the results match, this would provide evidence that Robert Daugherty is the father of John Robert Dyer. Currently Robert Dyer has no matches with the surname Daugherty (or variants) in his Y-DNA match list.<sup>36</sup> The Doherty Surname Y-DNA Project at FamilyTreeDNA contains 690 members.<sup>37</sup> Project administrators could share if any of the participants are descendants of Robert Daugherty or his patrilineal relatives.

### Expected Sharing for 4th cousins

Several of the descendants of John Robert Dyer and Barsheba Tharp have shared their AncestryDNA results for further analysis. The match lists for these descendants could identify additional descendants of Robert Daugherty and Sarah Taylor to review. They could also point to another man for the father of John Robert Dyer. Their match lists should be analyzed and compared with cluster 12 and 3 to determine if expected amounts of shared DNA appear between known descendants of John Robert Dyer and Barsheba Tharp and the hypothesized cousins descended from Robert Daugherty and Sarah Taylor. The following descendants of John Robert Dyer have shared their DNA test results:

- Tester K (great granddaughter of Augustus Dyer)
- Tester L (great granddaughter of Richard Fain Dyer)
- Tester M (great-granddaughter of Charles McKinney Dyer)

---

<sup>36</sup> "Y-DNA-Matches for Robert Dyer," database report for 111 markers, *FamilyTreeDNA* (<https://www.familytreedna.com> : accessed 11 Nov 2019).

<sup>37</sup> *FamilyTreeDNA*, Doherty Surname Y-DNA Project - Y-DNA Classic Chart (<https://www.familytreedna.com/public/doherty?iframe=yresults> : accessed 11 Nov 2019).

- Tester N (great-grandson of Elizabeth Frances Dyer)

## Conclusion

Barsheba Tharp is probably the daughter of Lewis Tharp and Johanna West. More research is needed to determine the documents that would support this relationship that the DNA seems to indicate. Clusters to the Tharp side of the family were eliminated from consideration when searching for John Robert Dyer's parents. A cluster with common ancestors Sarah Taylor and Robert Daugherty was connected to the Dyer/Tharp cluster.

John Robert Dyer could be the son of Sarah Taylor and Robert Daugherty. More research is needed to test the hypothesis. Records about the Daugherty family should be found in Kentucky to understand the timeline of the family. The parents of Sarah Taylor and Robert Daugherty should be researched in order to test the hypothesis that they had descendants who also match RGD and his brothers. It is possible that Sarah Taylor is the mother of John Robert Dyer, but there was a different father. Determine if there are any independent Daugherty matches in group 3 who don't descend from the Taylor common ancestral couple, Robert Taylor and Catherine Ellis.

## Future Research

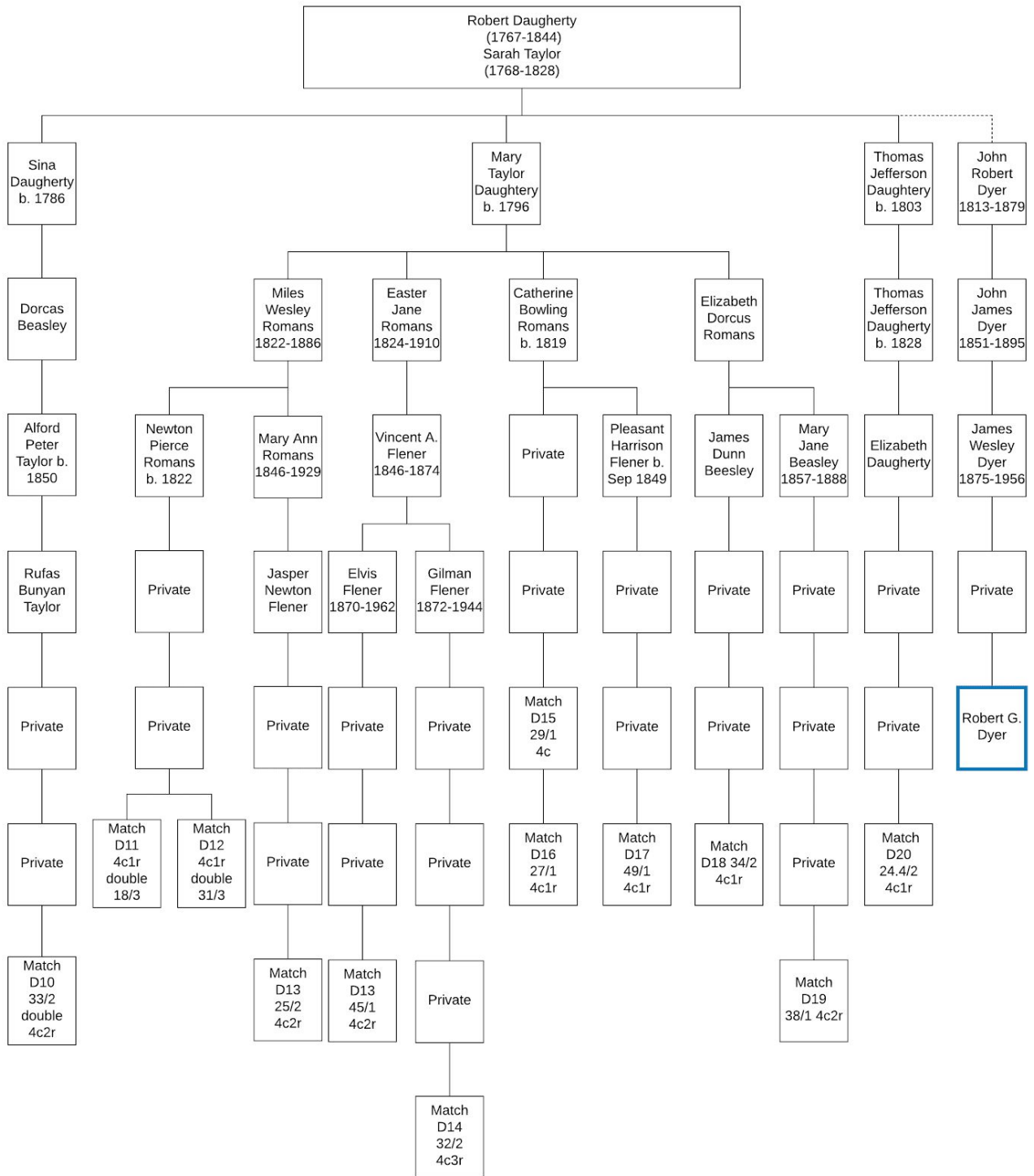
- Identify each DNA Match in the pink cluster, group 12 and find the ancestor in common
- Identify each DNA Match in the blue cluster, group 3 and find the ancestor in common
- Find any independent Daugherty matches who are not descendants of Robert Taylor and Catherine Ellis.
- Identify the common ancestral couple of the brown cluster, group 10, by finding the intersection of the DNA matches' trees.
- Create cluster charts of DNA matches for RGD, WD, and JD at Family Tree DNA and MyHeritage; as well as using the DNA Gedcom Colins-Leeds method, to locate any additional matches that belong in the clusters shown in the ConnectedDNA network graph.
- Compare DNA of Taylor/Daugherty descendants with known descendants of John Robert Dyer and Barsheba Tharp
- Research the relationship between Johanna West and possible parents, John West and Bathsheba Arnold
- Research the relationship between Bathsheba Arnold and possible parents, Humphrey Arnold and Harriett Smith.
- Verify DNA match's trees going back to common ancestral couple Robert Daugherty and Sarah Taylor to ensure parent child links are correct and proven

- Locate a male descendant of Robert Daugherty who could take a Y-DNA test and/or talk to project administrators to find out if any of Robert Daugherty's patrilineal relatives have tested already
- Search Butler County, Kentucky records for John Robert Dyer to see if he left any trace in Kentucky
- Research the lives of Robert Daugherty and Sarah Taylor and their children
- Ask DNA matches in Cluster 3 to transfer to MyHeritage, FamilyTreeDNA, or Gedmatch to work with segment data
- Create cluster charts for the following Dyer descendants who shared DNA and locate the Dyer cluster; search for related clusters who could contain information about the parents of John Robert Dyer
  - Tester K (great granddaughter of Augustus Dyer)
  - Tester L (great granddaughter of Richard Fain Dyer)
  - Tester M (great-granddaughter of Charles McKinney Dyer)
  - Tester N (great-grandson of Elizabeth Frances Dyer)

## Attachments

1. Descendants of Robert Daugherty and Sarah Taylor whose DNA match RGD
2. AncestryDNA ThruLines Suggestion for Robert Daugherty and Sarah Taylor

Attachment 1 - Descendants of Robert Daugherty and Sarah Taylor whose DNA match RGD





Attachment 2 - AncestryDNA ThruLines Suggestion for Robert Daugherty and Sarah Taylor

"ThruLines for Robert Daugherty," report for Robert G. Dyer, 11 November 2019, *AncestryDNA* (<https://ancestry.com> : accessed 11 Nov 2019).

The screenshot displays the AncestryDNA ThruLines interface for Robert Daugherty. At the top, the title is "ThruLines™ for Robert Daugherty" with a subtitle: "ThruLines uses Ancestry® trees to suggest that Robert Geoffrey Dyer may be related to 71 DNA matches through Robert Daugherty." Below this, a "Relationships" section shows a tree structure. At the top of the tree is Robert Daugherty (3rd great-grandfather, 1767-1844). He has six children listed: Sina Daugherty (3rd great-aunt, 1786-1822, 17 DNA Matches), Elizabeth Daugherty (3rd great-aunt, 1787-1855, 6 DNA Matches), Mary T Daugherty (3rd great-aunt, 1798-1880, 38 DNA Matches), Peter P Daugherty (3rd great-uncle, 1798-1860, 3 DNA Matches, marked "EVALUATE"), John Robert Dyer (2nd great-grandfather, 1812-1879), and Thomas J Daugherty (Half 3rd great-uncle, 1829-1906, 7 DNA Matches, marked "EVALUATE"). Below John Robert Dyer, there is a node for Robert Geoffrey Dyer (RD) with a "3" in a dropdown menu, indicating three matches.

*ThruLines hypothesis for Robert Daugherty and Sarah Taylor*