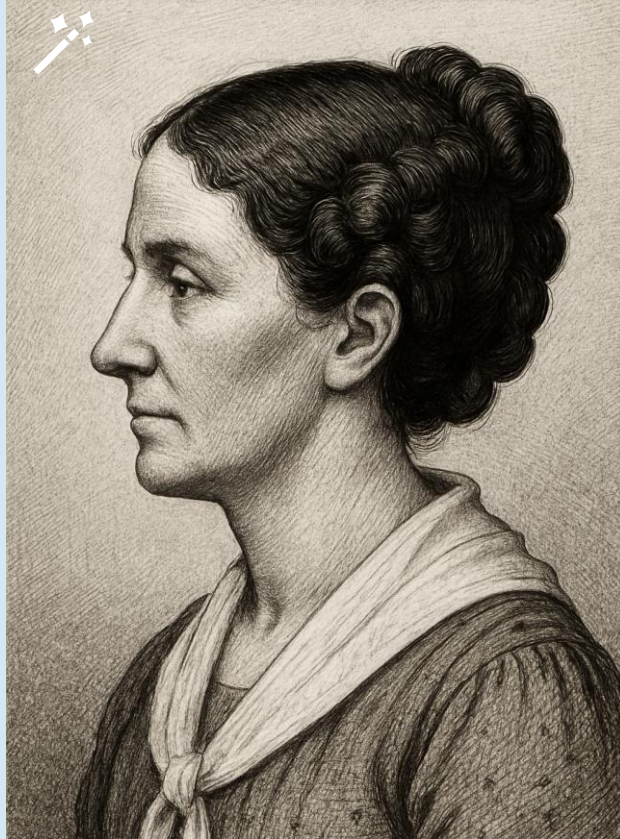
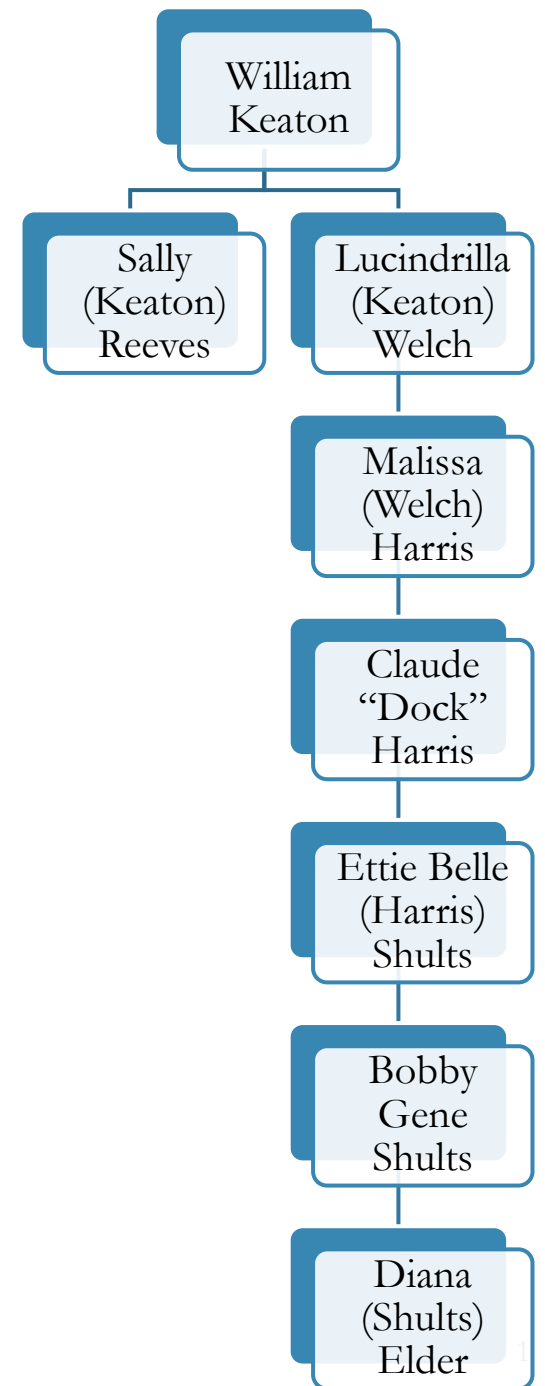


# Sally Keaton: My Fourth-Great-Grandmother's Sister

By Nicole Elder Dyer



AI guess for what Sally may have looked like. Image generated by ChatGPT, 4o, user Nicole Dyer, 24 May 2025, (<https://openai.com>).



The State of South Carolina  
County of Anderson, District 3 to Abner Keaton Archibald Keaton John Keaton John  
Keaton, Phineas Keaton Ephraim Keaton Andrew Keaton  
James Keaton William Keaton Phineas Keaton & Polly  
his wife William Perry & Sally his wife Wladther & Mariah  
his wife George Welch & Ann Diller his wife & Catherine  
Keaton the widow of the deceased his and legal rep-  
resentation of William Keaton deceased — Greeting —  
You are hereby to be and appear before at the Court of Ordina-  
ry to be holden at Anderson in South Carolina for and upon  
discovery on the first Monday of January next to show  
cause if any you care why the real estate of ~~William~~  
William Keaton dec'd and of which he is a devisee and  
proprietor consisting of a tract of land lying on the east side  
of Keenock Creek in the District of ~~Anderson~~ containing one hundred  
and one fifty acres more or less should not be divided  
or sold or otherwise disposed of to the widow and the ~~children~~  
surviving two thirds to the other living in equal pro-  
portion Given under my hand & seal this  
8th day of September A.D. 1830

Anderson District, South  
Carolina, estate packets, no.  
362, William Keaton, notice to  
absent defendants to appear, 8  
September 1830, item 9;  
image, *FamilySearch*  
(<https://www.familysearch.org/ark:/61903/3:1:3QHV-J38V-JLT6> : accessed 24 May 2025).

John Harris, C. A. D.

The State of South Carolina  
 County of Anderson, this 3<sup>rd</sup> day of August 1830  
 I, John Harris, Clerk of the Court, do hereby certify that  
 the following are the persons who have been appointed  
 executors of the will of the deceased William Keaton  
 namely, Andrew Keaton, Ephraim Keaton, Andrew Keaton,  
 James Keaton, William Keaton, Phineas Keaton, Hannah  
 his wife, William Perry & Sally his wife, Madeline & Mariah  
 his wife, George Welch & Annabella his wife & Catherine  
 Keaton the widow of the deceased but an equal repre-  
 sentative of William Keaton deceased - Greeting -

William Perry & Sally

William Perry and Sally his wife have been appointed  
 executors of the will of the deceased William Keaton  
 of the County of Anderson in the State of South Carolina  
 and have taken the oath of office and qualification  
 and have been sworn in as such executors of the will  
 of the deceased William Keaton and have been  
 authorized to collect and receive all the debts and  
 claims due to the deceased William Keaton and to  
 pay the same to the persons entitled to the same  
 in and according to the provisions of the will of the  
 deceased William Keaton and to execute all the other  
 duties and powers which may be lawfully required  
 of them as executors of the will of the deceased  
 William Keaton.

Given under my hand & seal this  
 3<sup>rd</sup> day of September A.D. 1830

John Harris, Clerk of the Court

Anderson District, South  
 Carolina, estate packets, no.  
 362, William Keaton, notice to  
 absent defendants to appear, 8  
 September 1830, item 9;  
 image, *FamilySearch*  
 (<https://www.familysearch.org/ark:/61903/3:1:3QHV-J38V-JLT6> : accessed 24 May 2025).

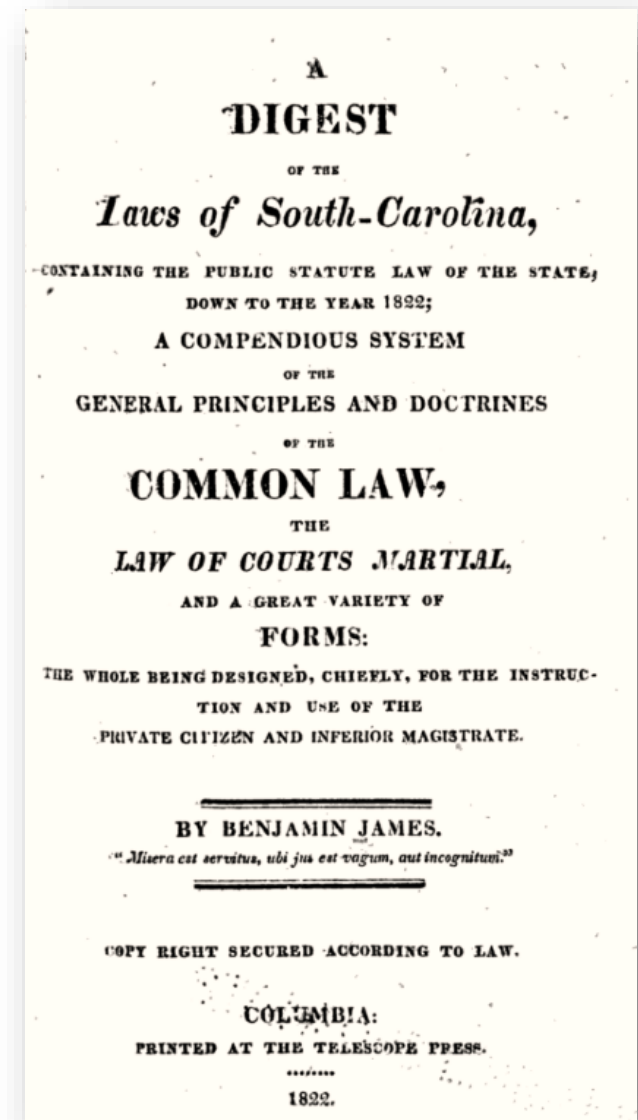
# INTESTATE ESTATES IN SOUTH CAROLINA

Widow takes one third of estate

Remainder divided between the children

If children deceased, their lineal descendants  
represent them

If no children, then parents and siblings take one  
moiety and widow the other



Benjamin James, *A Digest of the Laws of South-Carolina: containing the public statute law of the state, down to the year 1822; a compendious system of the general principles and doctrines of the common law, the law of courts martial, and a great variety of forms: the whole being designed, chiefly, for the instruction and use of the private citizen and inferior magistrate* (Columbia: Telescope Press, 1822), 192.

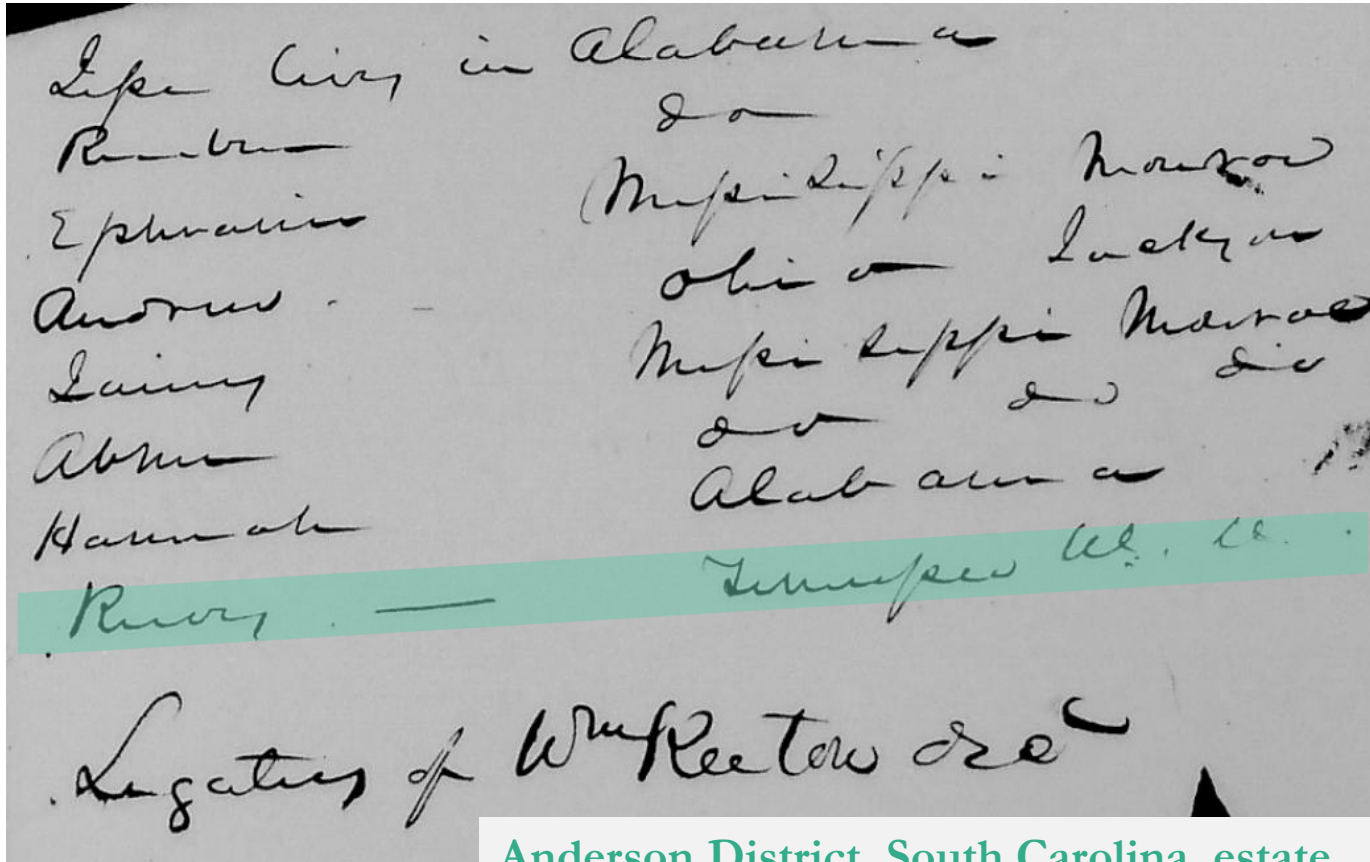
# WILLIAM KEATON'S DISTRIBUTEES

- Calculations for distribution
- “14 legatees or equal shares will give to each child and widow the sum of \$18.50”

Anderson District, South Carolina, estate packets, no. 362, William Keaton, calculations for distribution, item 24.

Estate of W<sup>m</sup> Keaton dec<sup>d</sup>—  
 Amount of Bond ————— \$299.05  
 Deduct debt, in a & advertising notice 40.00  
 For his legatees ~~259.05~~  
 14 legatees or equal shares will give to  
 each child & widow the sum of \$18.50  
 12. \$108.10—  
 Archibald Keaton P<sup>d</sup>  
 John Keaton P<sup>d</sup>  
 Wm Sadder P<sup>d</sup>  
 George Welch P<sup>d</sup>  
 Wm Keaton P<sup>d</sup>  
 Catherine Keaton P<sup>d</sup>  
 Andrew Keaton P<sup>d</sup>  
 Lanny Keaton P<sup>d</sup>  
 Abner Keaton P<sup>d</sup>  
 Ephraim Keaton P<sup>d</sup>

# WHO WAS SALLY REEVES?



Anderson District, South Carolina, estate packets, no. 362, William Keaton, absent legates, item 25, undated, ca. 1830-1843.

## Estate File

Daughter of William Keaton and wife of William Reeves

## Surname Confusion

Reeves was originally transcribed as Rives or River

## Location Details

In 1830, Sally and William Reeves were located outside of South Carolina; and at one point, in Tennessee

Table 1 – Results from 1830 Census Search for William Reeves in Tennessee		
Name & note	Locality	Source Citation
William Reeves Male 30-39, Female 20-29	Winchester, Franklin Co., TN	1830 U.S. census, Franklin County, Tennessee, population schedule, Winchester, p. 56, line 15, William Reeves; database with images, Ancestry ( <a href="https://www.ancestry.com/imageviewer/collections/8058/images/4409557_00118">https://www.ancestry.com/imageviewer/collections/8058/images/4409557_00118</a> : accessed 1 February 2024); citing NARA microfilm publication M19, roll 176.
William Reeves Male 30-39 Female 20-29	Gibson Co., TN	1830 U.S. census, Gibson County, Tennessee, population schedule, p. 244, line 20, William Reeves; database with images, Ancestry ( <a href="https://www.ancestry.com/imageviewer/collections/8058/images/4409557_00498">https://www.ancestry.com/imageviewer/collections/8058/images/4409557_00498</a> : accessed 1 February 2024); citing NARA microfilm publication M19, roll 176.
William Reeves Male 20-29 Female 20-29	Hickman Co., TN p. 267, line 4	1830 U.S. census, Hickman County, Tennessee, population schedule, p. 267, line 14, William Reeves; database with images, Ancestry ( <a href="https://www.ancestry.com/imageviewer/collections/8058/images/4409557_00548">https://www.ancestry.com/imageviewer/collections/8058/images/4409557_00548</a> : accessed 1 February 2024); citing NARA microfilm publication M19, roll 176.
William Reeves Male 30-39 Female 20-29	Hickman Co., TN p. 269, line 24	1830 U.S. census, Hickman County, Tennessee, population schedule, p. 269, line 24, William Reeves [Reeves]; database with images, Ancestry ( <a href="https://www.ancestry.com/imageviewer/collections/8058/images/4409557_00552">https://www.ancestry.com/imageviewer/collections/8058/images/4409557_00552</a> : accessed 1 February 2024); citing NARA microfilm publication M19, roll 176.
William Reeves Male 50-59 Female 30-39 Female 50-59	Smith Co., TN	1830 U.S. census, Smith County, Tennessee, population schedule, p. 45, line 7, William Reeves [Reeves]; database with images, Ancestry ( <a href="https://www.ancestry.com/imageviewer/collections/8058/images/4409701_00090">https://www.ancestry.com/imageviewer/collections/8058/images/4409701_00090</a> : accessed 1 February 2024); citing NARA microfilm publication M19, roll 181.
William Reeves Male 50-59 Female 30-39	Cocke Co., TN	1830 U.S. census, Cocke County, Tennessee, population schedule, p. 269, line 12, William Reeves; database with images, Ancestry ( <a href="https://www.ancestry.com/imageviewer/collections/8058/images/4409558_00530">https://www.ancestry.com/imageviewer/collections/8058/images/4409558_00530</a> : accessed 1 February 2024); citing NARA microfilm publication M19, roll 180.
William Reeves Male 20-29 Female 20-29	Hardeman Co., TN	1830 U.S. census, Hardeman County, Tennessee, population schedule, p. 362, line 18, William Reeves; database with images, Ancestry ( <a href="https://www.ancestry.com/imageviewer/collections/8058/images/4409557_00742">https://www.ancestry.com/imageviewer/collections/8058/images/4409557_00742</a> : accessed 1 February 2024); citing NARA microfilm publication M19, roll 176.
William Reeves Male 30-39 Female 40-49	Davidson Co., TN	1830 U.S. census, Davidson County, Tennessee, population schedule, p. 227, line 15, Wm Reeves; database with images, Ancestry ( <a href="https://www.ancestry.com/imageviewer/collections/8058/images/4410786_00452">https://www.ancestry.com/imageviewer/collections/8058/images/4410786_00452</a> : accessed 1 February 2024); citing NARA microfilm publication M19, roll 174.
William Reeves Male 50-59 Female 50-59	Bedford Co., TN	1830 U.S. census, Bedford County, Tennessee, population schedule, p. 77, line 24, Wm Burris [Reeves]; database with images, Ancestry ( <a href="https://www.ancestry.com/imageviewer/collections/8058/images/4410786_00157">https://www.ancestry.com/imageviewer/collections/8058/images/4410786_00157</a> : accessed 1 February 2024); citing NARA microfilm publication M19, roll 174.
William Reeves Male 50-59 Female 50-59	Giles Co., TN	1830 U.S. census, Giles County, Tennessee, population schedule, p. 207, line 14, Wm H Reares [Reeves]; database with images, Ancestry ( <a href="https://www.ancestry.com/imageviewer/collections/8058/images/4409557_00424">https://www.ancestry.com/imageviewer/collections/8058/images/4409557_00424</a> : accessed 1 February 2024); citing NARA microfilm publication M19, roll 176.
William Reeves Male 40-49 Female 30-39	Lincoln Co., TN	1830 U.S. census, Lincoln County, Tennessee, population schedule, p. 254, line 17, Wm Rorer [Reves]; database with images, Ancestry ( <a href="https://www.ancestry.com/imageviewer/collections/8058/images/4185986_00502">https://www.ancestry.com/imageviewer/collections/8058/images/4185986_00502</a> : accessed 1 February 2024); citing NARA microfilm publication M19, roll 177.
Willis Reeves Male 30-39 Female 30-39	Troy, Obion, TN	1830 U.S. census, Obion County, Tennessee, population schedule, Troy, p. 154, line 12, Willis Reeves; database with images, Ancestry ( <a href="https://www.ancestry.com/imageviewer/collections/8058/images/4410825_00303">https://www.ancestry.com/imageviewer/collections/8058/images/4410825_00303</a> : accessed 1 February 2024); citing NARA microfilm publication M19, roll 179.
W.P. Reeves Male 20-29 Female 20-29	Shelby Co., TN	1830 U.S. census, Shelby County, Tennessee, population schedule, p. 12, line 26, W P Reary [Reeves]; database with images, Ancestry ( <a href="https://www.ancestry.com/imageviewer/collections/8058/images/4409701_00026">https://www.ancestry.com/imageviewer/collections/8058/images/4409701_00026</a> : accessed 1 February 2024); citing NARA microfilm publication M19, roll 181.

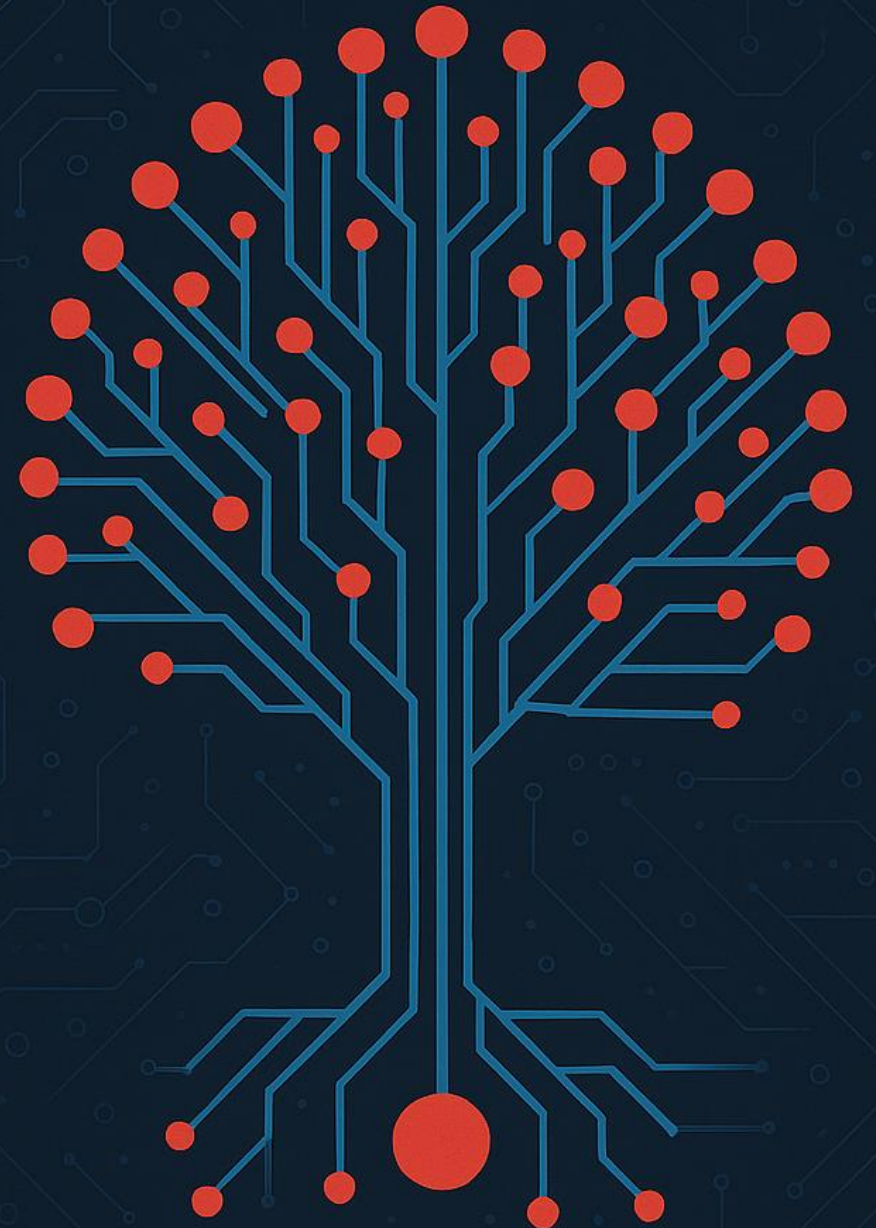
# THE CHALLENGE

- 13 potential William Reeves households in 1830 in Tennessee
- 12 different counties
- Potential matches in Franklin, Gibson, Hickman, Smith, Cocke, Hardeman, Davidson, Lincoln, Obion, and Shelby counties

# RESEARCH QUESTION

Which of the thirteen William Reeves households enumerated in Tennessee in the 1830 census belonged to the husband of Sally Reeves, who was named as child and distributee in William Keaton's 1830 estate records in Anderson District, South Carolina?

Sally was the wife of William Reeves and they resided in Tennessee in 1830.



# SALLY KEATON'S AGE ESTIMATE

- Correlation of 1790-1820 censuses – William Keaton's households
  - 1800 census: two females under age 10
  - 1810 census: two females under 10 (b. 1800-1810) and two females 10-15 (b. 1795-1800)
- Birth order list in estate file: all sons, then the daughters
- Correlation with known children's 1850 census enumerations and headstones
  - Polly born in 1797
  - [--?--] born 1795-1800
  - Mariah born in 1801
  - Lucinda born in 1805
- Sally birth year estimate: 1799

## Order of Heirs

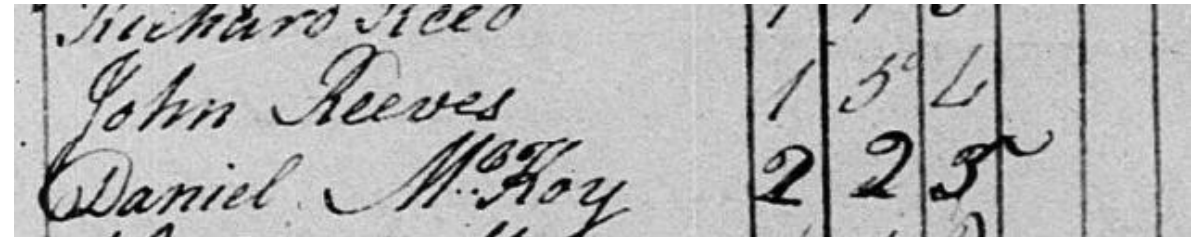
1. Abner Keaton
2. Archibald Keaton
3. Jesse Keaton
4. John Keaton,
5. Reuben Keaton
6. Ephraim Keaton
7. Andrew Keaton
8. James Keaton
9. William Keaton
10. Reuben Hannah & Polly his wife
11. William Reeves & Sally his wife
12. Wm Saddler & Mariah his wife
13. George Welch & Lucindrilla

Anderson District, South Carolina, estate packets, no. 362, William Keaton, notice to absent defendants to appear, 8 September 1830, item 9.

## REEVES NEIGHBORS OF WILLIAM KEATON

Review of neighbors of William Keaton from 1790-1820 censuses revealed two Reeves individuals of interest:

1. John Reeves, neighbor on 1790 census
2. Burgess Reeves, neighbor on 1800 census



1790 U.S. census, Pendleton District, South Carolina, population schedule, p. 13, col. 3, line 5, John Reeves

498	Gursey Snow	1		2	1
499	John Snow	1	2	2	"
500	Stephen Harris	1	1	"	1
501	Stephen Harey	2	"	1	1
502	John Orr	1	3	"	1
503	William Ringler	3	"	"	1
504	William Heaton	3	3	"	1
505	William Elrod	2	"	1	"

1800 U.S. census, Pendleton District County, South Carolina, population schedule, p. 154, line 1, Burgess Reeves

# REEVES ESTATE RECORDS IN PENDLETON DISTRICT

## **Burgess Reeves:** 1811 will – legatees:

- Fanny Reeves, wife and executrix
- John Mauldin, executor
- John Reeves, child and executor
- Mauldin Reeves, child
- Leathy Reeves, child
- William Reeves, child

## **John Reeves:** 1846 administration – heirs:

- John A. Reeves
- R.W. Reeves
- Henry Tyler & wife Patience
- Micajah Anderson & wife Frances
- Heirs of William B. Dickson by his wife Jane N., viz. Mary Speed and William Baily Dickson.
- Mary E. Reeves

I wish I give & bequeath to my loving wife  
Fanny Reeves all my estate, both real and personal  
for her peaceably to possess and enjoy during her  
natural life or widowhood and <sup>estate</sup> her decease  
or marriage to be equally divided among—  
her, (my wife) & my children. viz. John Reeves  
Mauldin Reeves, Leathy Reeves & William Reeves  
except the said William Reeves who is to have  
an horse, saddle, & cow & calf, extra, more than  
the rest, also. I constitute & appoint my loving  
wife of Fanny Reeves. my son John Reeves. & John Mauldin



Photo added by [Lanawrites](#)

## Maulden Reeves

**BIRTH** 5 Apr 1781  
North Carolina, USA

**DEATH** 8 Nov 1873 (aged 92)  
Medon, Madison County, Tennessee, USA

**BURIAL** [Croom Cemetery](#)  
Medon, Madison County, Tennessee, USA [Add to Map](#)

**MEMORIAL ID** 84843338 · [View Source](#)

SHARE

[+ SAVE TO](#)

[SUGGEST EDITS](#)



[+ Add Photos](#)

[Request Photo](#)

MEMORIAL

PHOTOS 3

FLOWERS 10

M. Reeves, Esq., an old and highly esteemed citizen, died last week. He has lived in this community quite a number of years; raised a large family of children that are scattered over four different States of the Union. He lived to an age that but few attain, 94 years and 6 months. He was esteemed by all who knew him.

D.D.

Added by [Cousin Randle](#)

### Family Members

#### Parents



[Frances Mauldin Reeves](#)  
1754–1823

#### Spouses



[Nancy Stevenson Reeves](#)  
1785–1828 (m. 1800)



[Carie Warren Reeves](#)  
unknown–1843

#### Siblings



[Aleathy Reeves Manning](#)  
1785–1832



[Burgess Reeves](#)  
1794–1860

#### Children



[Alethea Reeves Moore](#)  
1803–1867



[Amy Elizabeth Reeves Moore](#)  
1805–1878



[Winifred Reeves Hardy](#)  
1807–1888



[William Maulden Reeves](#)  
1813–1878

# FINDAGRAVE MEMORIALS

- Maulden Reeves, mentioned in will, illegible headstone, Croom Cemetery in Madison Co., Tennessee
- Frances (Mauldin) Reeves 1754-1823, no headstone image, citing Andersonville Cemetery
- Aleathy (Reeves) Manning 1785-1832, no headstone image, in the Ebenezer United Methodist Cemetery in Anderson County
- Burgess Reeves, not mentioned in will
- No William or John Reeves

*Find a Grave*, database and images

(<https://www.findagrave.com/memorial/84843338/maulden-reeves>: accessed May 24, 2025), Maulden Reeves (1781–1873), memorial 84843338, citing Croom Cemetery, Medon, Madison County, Tennessee; Maintained by HGWells (contr. 49850702).



# BURGESS REEVES AND FRANCES MAULDIN

- Executor John Mauldin headed a household in Pendleton District, SC in 1790
- Database of marriages: Burgess Reeves and France Mauldin married in Granville, North Carolina. “U.S. and International Marriage Records, 1560-1900” – from Family group sheets
- Burgess Reeves lived in Granville Co., NC in 1786 (state census)

"North Carolina, U.S., State Census, 1784-1787," Burgis Reeves, Granville Co., database with images, *Ancestry* (<https://www.ancestry.com/discoveryui-content/view/2870:3005> : accessed 3 February 2024); list taken by Zacharias Higgs in Fishing Creek district, 1786.

12 & above 50	Total	Head of Household						Total
			WM 21-60 yrs.	WM under 21 & above 60	WF all ages	Blacks 12-50	Blacks under 12 & above 50	
6		Elijah Parrish	1	4	4	.	.	9
2		Wm. Parham Sen.	1	4	3	.	.	8
8		Leonard Clark	1	5	3	2	2	13
		Isaac Hopkins	2	2	1	.	.	5
12		Jacob Byrum	1	.	2	.	.	3
14		Joshua Hutchinson	1	.	.	.	.	1
12		Jesse Parrish	2	1	7	.	.	10
32		Vallentine Tuder	1	.	2	.	.	3
30		Stephen Inscoe	1	.	.	.	.	1
9		Burgis Reeves	1	2	1	.	.	4
1		Allen Reeves	1	2	2	.	.	5
4			25	37	63	14	13	152

# REEVES – MAULDIN CONNECTION WAS FRANCES A MAULDIN?

- 1811 Will - Burgess names wife Fanny
  - one of the executors was John Mauldin
  - One of the sons was Mauldin Reeves, potentially named after his mother's maiden name
- Proximity of John Maulden and Burgess Reeves in 1790
- 24 June 1791 – Burgess Reeves was grantee in a deed and Blake Mauldin was the subscribing witness (Pendleton District, SC)
- 1782 Deed of John Mauldin to Burgess Reeves (Granville, NC)
- 1758 Granville, NC tax list – John Mauldin and Malikiah Reves

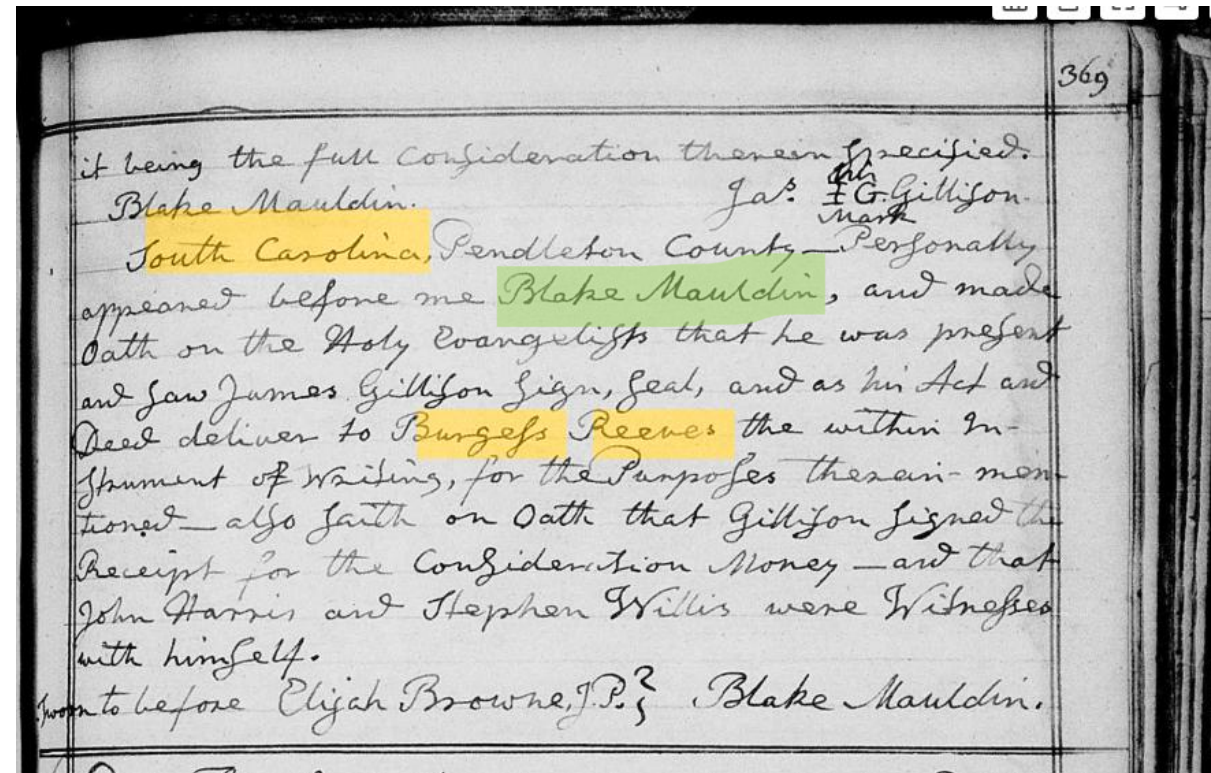
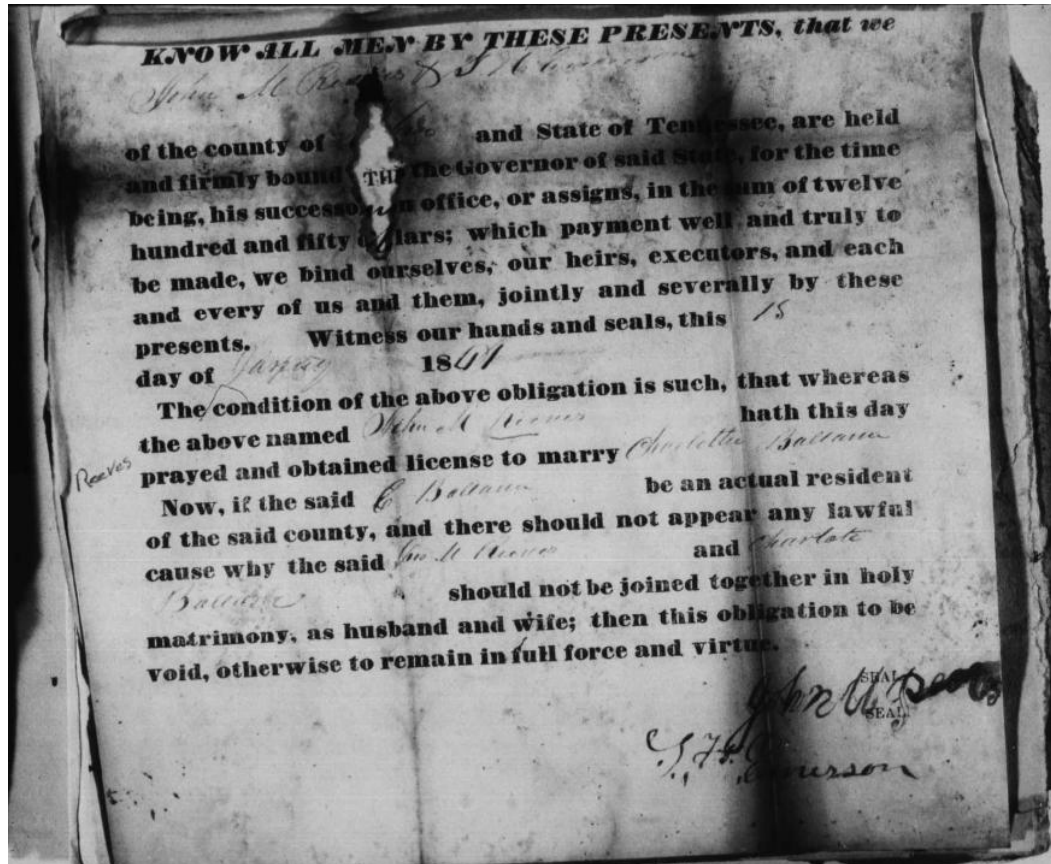


Table 1 – Results from 1830 Census Search for William Reeves in Tennessee		
Name & note	Locality	Source Citation
William Reeves Male 30-39, Female 20-29	Winchester, Franklin Co., TN	1830 U.S. census, Franklin County, Tennessee, population schedule, Winchester, p. 56, line 15, William Reeves; database with images, Ancestry ( <a href="https://www.ancestry.com/imageviewer/collections/8058/images/4409557_00118">https://www.ancestry.com/imageviewer/collections/8058/images/4409557_00118</a> : accessed 1 February 2024); citing NARA microfilm publication M19, roll 176.
William Reeves Male 30-39 Female 20-29	Gibson Co., TN	1830 U.S. census, Gibson County, Tennessee, population schedule, p. 244, line 20, William Reeve; database with images, Ancestry ( <a href="https://www.ancestry.com/imageviewer/collections/8058/images/4409557_00498">https://www.ancestry.com/imageviewer/collections/8058/images/4409557_00498</a> : accessed 1 February 2024); citing NARA microfilm publication M19, roll 176.
William Reeves Male 20-29 Female 20-29	Hickman Co., TN p. 267, line 4	1830 U.S. census, Hickman County, Tennessee, population schedule, p. 267, line 14, William Reeves; database with images, Ancestry ( <a href="https://www.ancestry.com/imageviewer/collections/8058/images/4409557_00548">https://www.ancestry.com/imageviewer/collections/8058/images/4409557_00548</a> : accessed 1 February 2024); citing NARA microfilm publication M19, roll 176.
William Reeves Male 30-39 Female 20-29	Hickman Co., TN p. 269, line 24	1830 U.S. census, Hickman County, Tennessee, population schedule, p. 269, line 24, William Reived [Reeves]; database with images, Ancestry ( <a href="https://www.ancestry.com/imageviewer/collections/8058/images/4409557_00552">https://www.ancestry.com/imageviewer/collections/8058/images/4409557_00552</a> : accessed 1 February 2024); citing NARA microfilm publication M19, roll 176.
William Reeves Male 50-59 Female 30-39 Female 50-59	Smith Co., TN	1830 U.S. census, Smith County, Tennessee, population schedule, p. 45, line 7, William Reores [Reeves]; database with images, Ancestry ( <a href="https://www.ancestry.com/imageviewer/collections/8058/images/4409701_00090">https://www.ancestry.com/imageviewer/collections/8058/images/4409701_00090</a> : accessed 1 February 2024); citing NARA microfilm publication M19, roll 181.
William Reeves Male 50-59 Female 30-39	Cocke Co., TN	1830 U.S. census, Cocke County, Tennessee, population schedule, p. 269, line 12, William Reeve; database with images, Ancestry ( <a href="https://www.ancestry.com/imageviewer/collections/8058/images/4409558_00530">https://www.ancestry.com/imageviewer/collections/8058/images/4409558_00530</a> : accessed 1 February 2024); citing NARA microfilm publication M19, roll 180.
William Reeves Male 20-29 Female 20-29	Hardeman Co., TN	1830 U.S. census, Hardeman County, Tennessee, population schedule, p. 362, line 18, William Rives; database with images, Ancestry ( <a href="https://www.ancestry.com/imageviewer/collections/8058/images/4409557_00742">https://www.ancestry.com/imageviewer/collections/8058/images/4409557_00742</a> : accessed 1 February 2024); citing NARA microfilm publication M19, roll 176.
William Reeves Male 30-39 Female 40-49	Davidson Co., TN	1830 U.S. census, Davidson County, Tennessee, population schedule, p. 227, line 15, Wm Reeves; database with images, Ancestry ( <a href="https://www.ancestry.com/imageviewer/collections/8058/images/4410786_00452">https://www.ancestry.com/imageviewer/collections/8058/images/4410786_00452</a> : accessed 1 February 2024); citing NARA microfilm publication M19, roll 174.
William Reeves Male 50-59 Female 50-59	Bedford Co., TN	1830 U.S. census, Bedford County, Tennessee, population schedule, p. 77, line 24, Wm Burris [Reeves]; database with images, Ancestry ( <a href="https://www.ancestry.com/imageviewer/collections/8058/images/4410786_00157">https://www.ancestry.com/imageviewer/collections/8058/images/4410786_00157</a> : accessed 1 February 2024); citing NARA microfilm publication M19, roll 174.
William Reeves Male 50-59 Female 50-59	Giles Co., TN	1830 U.S. census, Giles County, Tennessee, population schedule, p. 207, line 14, Wm H Rearers [Reeves]; database with images, Ancestry ( <a href="https://www.ancestry.com/imageviewer/collections/8058/images/4409557_00424">https://www.ancestry.com/imageviewer/collections/8058/images/4409557_00424</a> : accessed 1 February 2024); citing NARA microfilm publication M19, roll 176.
William Reeves Male 40-49 Female 30-39	Lincoln Co., TN	1830 U.S. census, Lincoln County, Tennessee, population schedule, p. 254, line 17, Wm Rorer [Reves]; database with images, Ancestry ( <a href="https://www.ancestry.com/imageviewer/collections/8058/images/4185986_00502">https://www.ancestry.com/imageviewer/collections/8058/images/4185986_00502</a> : accessed 1 February 2024); citing NARA microfilm publication M19, roll 177.
Willis Reeves Male 30-39 Female 30-39	Troy, Obion, TN	1830 U.S. census, Obion County, Tennessee, population schedule, Troy, p. 154, line 12, Willis Reeves; database with images, Ancestry ( <a href="https://www.ancestry.com/imageviewer/collections/8058/images/4410825_00303">https://www.ancestry.com/imageviewer/collections/8058/images/4410825_00303</a> : accessed 1 February 2024); citing NARA microfilm publication M19, roll 179.
W.P. Reeves Male 20-29 Female 20-29	Shelby Co., TN	1830 U.S. census, Shelby County, Tennessee, population schedule, p. 12, line 26, W P Reary [Reeves]; database with images, Ancestry ( <a href="https://www.ancestry.com/imageviewer/collections/8058/images/4409701_00026">https://www.ancestry.com/imageviewer/collections/8058/images/4409701_00026</a> : accessed 1 February 2024); citing NARA microfilm publication M19, roll 181.

# 1830 CENSUS SEARCH

- 13 potential William Reeves households
- 12 different counties
- 2 were eliminated based on household composition – no females between ages of 20-50
- Potential matches in Franklin, Gibson, Hickman, Smith, Cocke, Hardeman, Davidson, Lincoln, Obion, and Shelby counties

# JOHN M. REEVES MARRIAGE IN GIBSON COUNTY, TENNESSEE



- Searched Ancestry Trees search for William Reeves, son of Burgess Reeves and Frances Mauldin
- William E. Reeves was found, with a wife named Sarah Jackson and son named John Mauldin Reeves
- John M. Reeves married Charlotte Ballance 17 January 1841 in Gibson Co., TN

Tennessee, U.S., Marriage Records, 1780-2002," John M Reeves and Charlote Ballance, 17 January 1841, Gibson Co., database with images; Ancestry (<https://www.ancestry.com/discoveryui-content/view/740994:1169> : 3 February 2024).

# GIBSON COUNTY, TENNESSEE

- 17 January 1841 John M. Reeves married Charlotte Ballance
- 1830 census Gibson Co – William Reeves
- 1840 census Gibson Co – William Reeves

1840 U.S. census, Gibson County, Tennessee, population schedule, p. 198, line 6, Wm Reaver [Reaves].

<small>                     Name of County, City,                      Ward, Town, Township,                      Parish, Precinct, Hamlet,                      or District.                 </small>	FREE WHITE MALES									
	NAMES OF HEADS OF FAMILIES.									
	Under 5	5 under 10	10 under 15	15 under 20	20 under 30	30 under 40	40 under 50	50 under 60	60 under 70	70 and over
Gibson County, Tenn.	511	455	393	294	166	288	189	112	47	
	<del>511</del>	<del>455</del>	<del>393</del>	<del>294</del>	<del>166</del>	<del>288</del>	<del>189</del>	<del>112</del>	<del>47</del>	
		1	1	1	.	.	1			
		.	2	.	.	.	1	.	.	
		.	.	.	.	.	.	.	.	
		1	1	.	.	.	1			
		.	.	.	.	1				
	2	2	2	.	.	.	1	.	.	
	2	1	1	.	.	1	.	.	.	
	1	.	.	.	.	1	.	.	.	

# 1850 CENSUS IN DESOTO COUNTY, MISSISSIPPI

18	551	551	John M. Reeves.	31	Mo.	Farming
19			Charlotte Reeves.	31	Fi.	
20			William W. Reeves.	7	Mo.	
21			Sarah. C. Reeves.	5	Fi.	
22			George L. Reeves.	3	Mo.	
23			Leathe. C. Reeves.	1	Fi.	
24	552	552	Sarah Reeves.	53	Fi.	
25			William E. Reeves.	21	Mo.	Farming
26			George L. Reeves.	13	Mo.	
27			Harris P. Reeves.	11	Mo.	
28			Henry M. Reeves.	10	Mo.	
29			Mary J. Reeves.	7	Fi.	

## John M. Reeves' 1850 Household

- John M. age 31 (b. 1831) Tennessee
- Inferred wife Charlotte age 31,
- Children born in Mississippi: Sarah (5), George (3), and Leathe (1)

## Sarah Reeves' 1850 Household

- Sarah age 53 (b. 1797) South Carolina
- Born in Tennessee: William E. (21), George L. (13), Harris P. (11), Henry M. (10)
- Born in Mississippi: Mary J. (7)


# REEVES CEMETERY

## Burial in Izard County, Arkansas

Sarah Reeves followed her son's migration path from Desoto Co., Mississippi to Izard County, Arkansas, and was buried in the Reeves family cemetery.

## Headstone Age

Headstones in same style; likely placed later (ca. 1910); didn't have specific dates



REEVES  
JOHN M.  
B. 1819 IN TN.  
D. BEF. 1900  
DONATED  
LAND FOR  
CEMETERY

Photo added by Sandra Smith


[+ Add Photos](#) [Request Photo](#)

### John Mauldin Reeves

**BIRTH** 1819  
**DEATH** unknown  
**BURIAL** [Reeves Cemetery](#)  
Melbourne, Izard County, Arkansas, USA [Add to Map](#)  
**PLOT** Unknown  
**MEMORIAL ID** 5664782 · [View Source](#)

[SHARE](#) [+ SAVE TO](#) [SUGGEST EDITS](#)


MEMORIAL PHOTOS 2 FLOWERS 2




Added by Mary Jane (Young) Evertz


**Inscription**  
None

**Family Members**

**Spouse**  
[Cordilia Jane McBride Reeves](#)  
1831–1920

**Children**

[Letha Reeves](#)  
1849–1870

[Henry Monroe Reeves](#)  
1874–1951

**Flowers** • 2 [Plant Me](#)



REEVES  
SARAH-WIFE  
OF WILLIAM  
1796-AFT. 1880

Photo added by Sandra Smith

[+ Add Photos](#) [Request Photo](#)

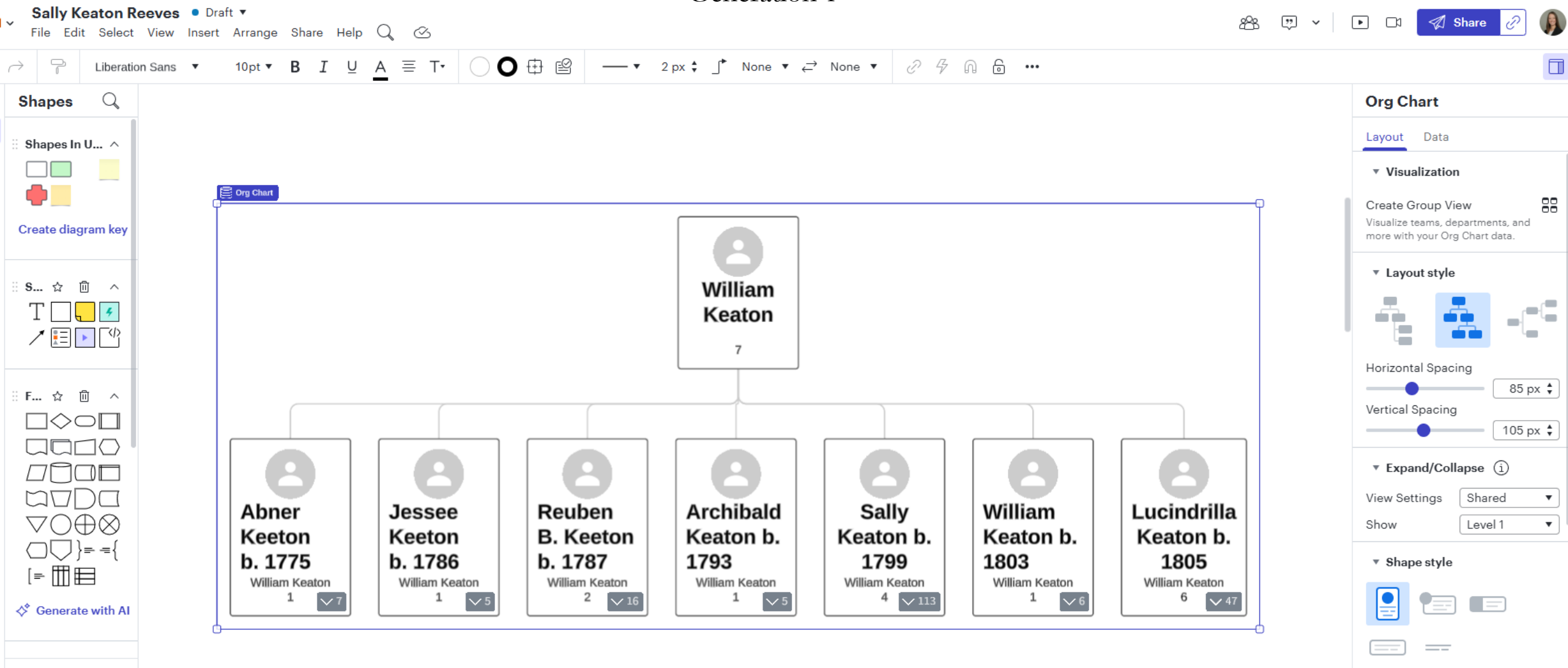
### Sarah Reeves

**BIRTH** 1796  
**DEATH** 1880 (aged 83–84)  
**BURIAL** [Reeves Cemetery](#)  
Melbourne, Izard County, Arkansas, USA [Add to Map](#)  
**MEMORIAL ID** 172833110 · [View Source](#)

[SHARE](#) [+ SAVE TO](#) [SUGGEST EDITS](#)

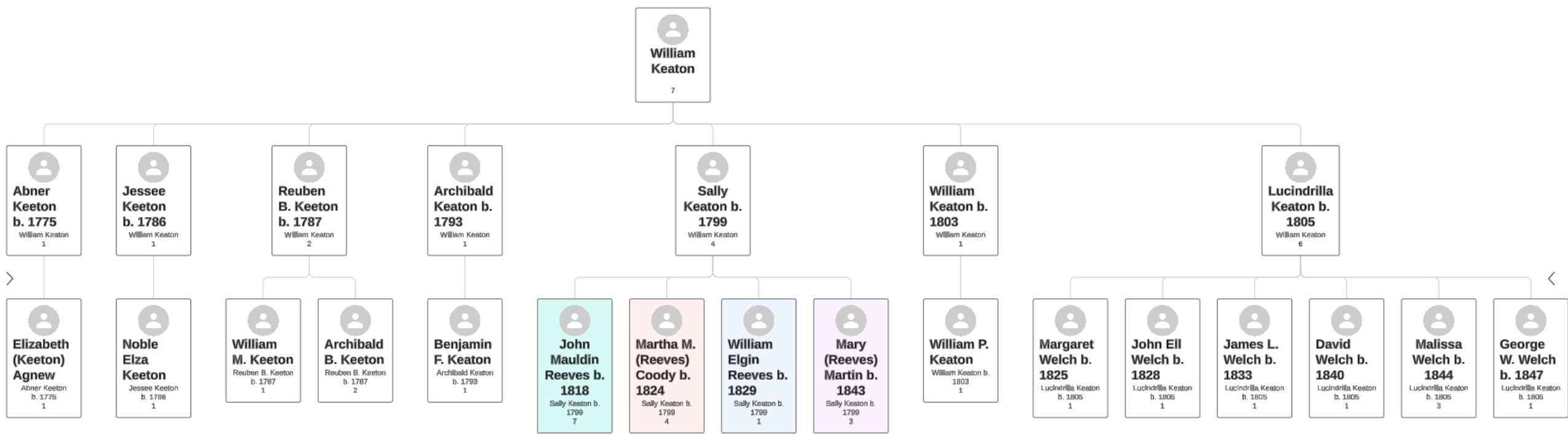
# LUCIDCHART OF AUTOSOMAL DNA MATCHES

Generation 1



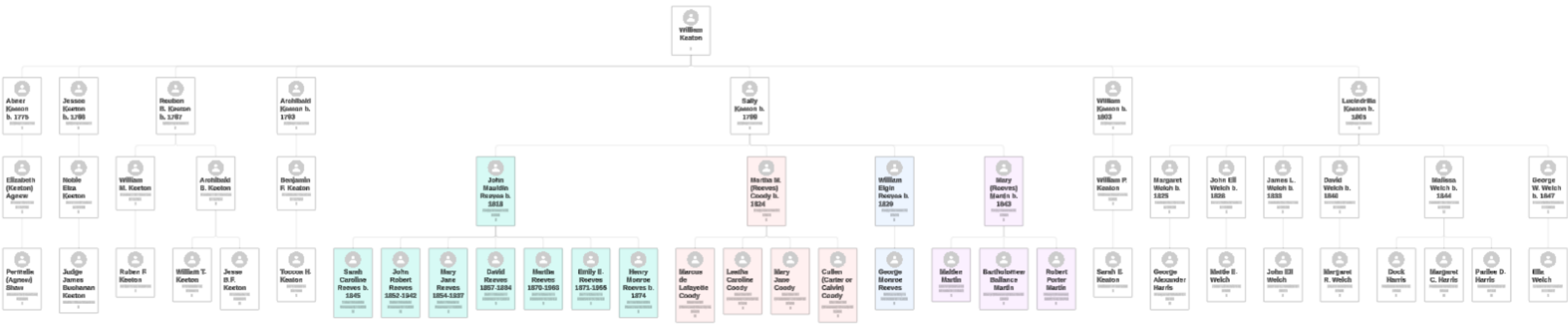
# LUCIDCHART OF AUTOSOMAL DNA MATCHES

Generation 2



# LUCIDCHART OF AUTOSOMAL DNA MATCHES

## Generation 3



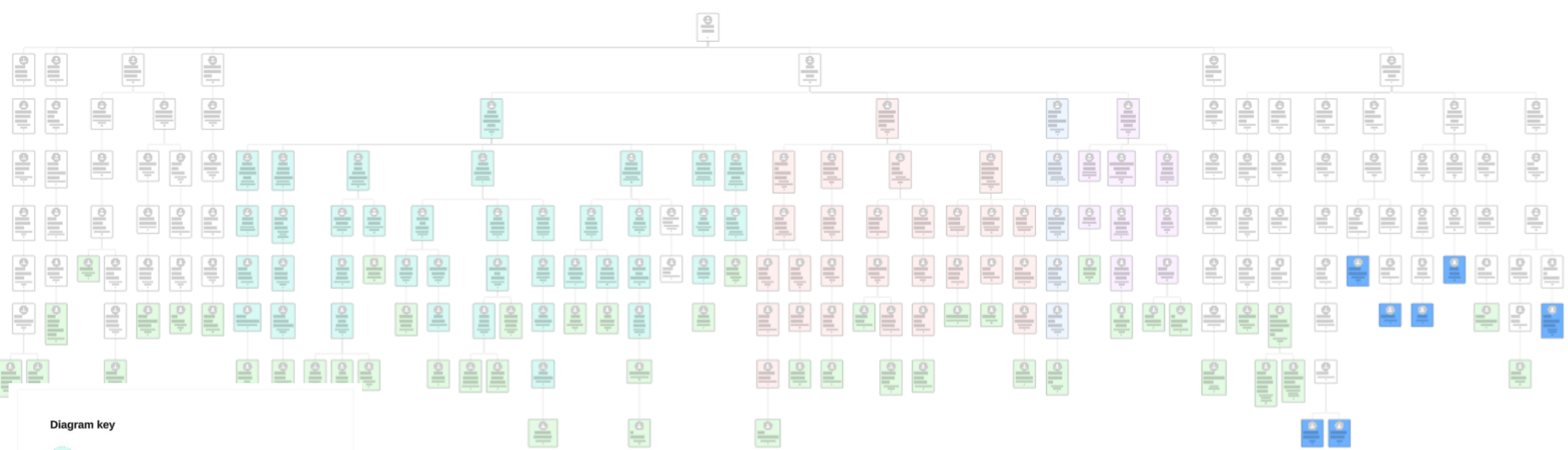
# LUCIDCHART OF AUTOSOMAL DNA MATCHES

Generation 4



# LUCIDCHART OF AUTOSOMAL DNA MATCHES

All Generations



**Diagram key**

- John Mauldin Reeves descendants
- Martha M. (Reeves) Coody descendants
- William Elgin Reeves descendants
- Mary J. (Reeves) Martin descendants
- DNA Matches
- DNA Test Takers

## Sally Keaton DNA Matches - Anonymized Version ( $\geq 10$ cM)

### Matches Between Sally (Keaton) Reeves Descendants and Other William Keaton Children's Descendants

Test-Taker	DNA Match	cM	Relationship	Sally's Child	Z-Score
Lucinda 2	Sally 1	10	4C2R	John Mauldin Reeves	-0.75
Lucinda 3	Sally 2	11	5C	John Mauldin Reeves	-0.78
Lucinda 4	Sally 2	11	4C1R	John Mauldin Reeves	-0.85
Lucinda 4	Sally 3	11	4C2R	John Mauldin Reeves	-0.69
Lucinda 4	Sally 4	11	5C1R	John Mauldin Reeves	-0.67
Lucinda 5	Sally 5	11	5C2R	Martha M. (Reeves) Coody	-0.58
Lucinda 3	Sally 6	12	5C	John Mauldin Reeves	-0.72
Lucinda 4	Sally 7	12	4C1R	John Mauldin Reeves	-0.80
Lucinda 4	Sally 8	12	4C	John Mauldin Reeves	-1.00
Lucinda 4	Sally 9	12	4C	John Mauldin Reeves	-1.00
Lucinda 2	Sally 10	12	4C2R	Martha M. (Reeves) Coody	-0.63
Lucinda 4	Sally 11	13	4C2R	John Mauldin Reeves	-0.56
Lucinda 4	Sally 12	13	4C1R	John Mauldin Reeves	-0.75
Lucinda 3	Sally 9	13	4C1R	John Mauldin Reeves	-0.75
Lucinda 3	Sally 4	13	4C2R	John Mauldin Reeves	-0.56
Lucinda 4	Sally 13	13	4C	John Mauldin Reeves	-0.96
Lucinda 3	Sally 8	14	4C1R	John Mauldin Reeves	-0.70
Lucinda 4	Sally 6	14	4C1R	John Mauldin Reeves	-0.70
Lucinda 4	Sally 14	14	4C1R	John Mauldin Reeves	-0.70
Lucinda 7	Sally 15	14	5C	Mary (Reeves) Martin	-0.61
Lucinda 5	Sally 16	14	5C1R	Martha M. (Reeves) Coody	-0.47
Lucinda 3	Sally 3	16	5C1R	John Mauldin Reeves	-0.33
Lucinda 2	Sally 3	17	4C2R	John Mauldin Reeves	-0.31

Sally Keaton Resear... Sally Keaton DNA Match Analy...

Strategically selected matches to validate... 35s

Sally Keaton DNA Matches - Anonymized Version Document · Version 6

4 Sally Keaton DNA Matches - Strategic Selection

40 High-Confidence Matches Supporting Sally (Keaton) Reeves as William Keaton's Daughter

Test-Taker | DNA Match | cM | Relationship

Strategically curated genetic match table f... 7s

Perfect! I've implemented **Option 4: Strategic Selection** and reduced the table from 36 matches to just **10 high-impact matches**. Here's what this achieves:

**Strategic Selection Success:**

✓ All 5 Keaton Test-Taker Lines Preserved:

- Reuben:** 2 strongest matches (46 cM, 37 cM)
- William:** 2 strongest matches (35 cM, 33 cM)
- Archibald:** 1 strong match (32 cM)
- Lucinda:** 4 matches across different Sally

Reply to Claude...

+

↔

🔍

🕒

Sonnet 4

↑

☰ v6 · Latest

Copy

Publish

×

### High-Confidence Matches Supporting Sally (Keaton) Reeves as William Keaton's Daughter

Test-Taker	DNA Match	cM	Relationship	Sally's Child	Z-Score	Evidence Type
Reuben 2	Sally 8	46	4C	John Mauldin Reeves	0.48	Highest overall match
Reuben 3	Sally 6	37	5C1R	John Mauldin Reeves	1.07	Cross-validation with Archibald 1
William 1	Sally 12	35	5C1R	John Mauldin Reeves	0.93	Highest from William line
William 1	Sally 17	33	6C	John Mauldin Reeves	1.15	Strongest Z-score
Archibald 1	Sally 6	32	5C	John Mauldin Reeves	0.39	Cross-validates Sally 6
Lucinda 2	Sally 16	32	4C2R	Martha M. (Reeves) Coody	0.63	Highest Lucinda match
Lucinda 2	Sally 25	28	4C1R	Mary (Reeves) Martin	0.00	Mary Martin line
Lucinda 5	Sally 22	27	5C1R	William Elgin Reeves	0.40	Cross-validation with Abner 2
Abner 2	Sally 22	22	6C	William Elgin Reeves	0.31	Cross-validates Sally 22
Lucinda 4	Sally 18	20	4C1R	Mary Jane (Reeves) Martin	-0.40	Only Mary Jane match



## Primary Naming Patterns

### 1. Mauldin Name Preservation Across Generations

- **Frances Mauldin** married Burgess Reeves in Granville County, North Carolina (1st generation)<sup>13^</sup>
- **John Mauldin** was a neighbor/possible relative in Pendleton District, SC (1790)<sup>17^</sup>
- **Mauldin Reeves** - son of Burgess and Frances, named after mother's maiden name<sup>20,23,24^</sup>
- **John Mauldin Reeves** (b. 1819) - son of William and Sally, middle name preserves paternal grandmother's maiden name<sup>43,44,45^</sup>
- **Maulden Martin** - son of Mary Jane (Reeves) Martin in 1880 census, continuing the Mauldin tradition<sup>77^</sup>

### 2. Leathy/Leashy Name Tradition

- **"Leashy Reeves"** - daughter of Burgess and Frances Mauldin (in 1811 will)<sup>25^</sup>
- **Aleathy (Reeves) Manning** (1785-1832) - buried in Ebenezer United Methodist Church Cemetery, same church associated with Keaton family<sup>26,27,28,29^</sup>
- **"Leathe C. Reeves"** (b. 1849) - daughter of John Mauldin Reeves, continuing family naming tradition<sup>30,49,50^</sup>
- **Letha Martin** - child of Mary Jane (Reeves) Martin, found in 1880 census<sup>77^</sup>

### 3. Parental Name Honoring

- **William** names repeated through generations:
  - William Keaton (father)<sup>3,4^</sup>



### 3. Parental Name Honoring

- **William** names repeated through generations:
  - William Keaton (father)^3,4^
  - William Reeves (husband)^18^
  - William E. Reeves (son, b. ~1829)^35^
  - William W. Reeves (grandson via John Mauldin Reeves)^48^
- **Sarah/Sally** name preservation:
  - Sarah "Sally" (Keaton) Reeves^31,42^
  - Sarah C. Reeves (granddaughter via John Mauldin Reeves)^48^

### 4. Cross-Family Naming Connections

- **George** names:
  - George L. Reeves (son of William and Sarah)^35^
  - George L. Reeves (son of John Mauldin Reeves)^48^
  - George Monroe Reeves (son of William Elgin Reeves)^64^
- **Mary/Mary Jane** pattern:
  - Mary "Polly" Keaton (Sally's sister, b. 1797)^8^
  - Mary J. Reeves (daughter, b. 1843)^35^
  - Mary Jane Reeves (granddaughter via John Mauldin Reeves, 1854-1937)^48^

## Special Inheritance and Naming Significance

### William Reeves' Special Bequest

In Burgess Reeves' 1811 will, William Reeves received extra inheritance ("horse, saddle & cow &

Reply to Claude...



Research



Claude Sonnet 4 ▾



# POTENTIAL FOR MITOCHONDRIAL DNA TESTING

- 1850 census shows at least one potential daughter of Sally Reeves: Mary J. Reeves
- Autosomal DNA and indirect evidence points toward two more daughters: Leatha Caroline (Reeves) Balance and Martha M. (Reeves) Coody
- Targeted testing for a matrilineal descendant of Lucindrilla Keaton has been completed
- One mitochondrial match so far is to a descendant of Catherine Gresham's sister, Susanna (Gresham) Mauldin
- The Mauldin surname provides another connection between the families

